



BEVERAGE-AIR

| | |
|-----------------|------------|
| Project: _____ | AIA# _____ |
| Item: _____ | |
| Location: _____ | SIS# _____ |
| Approved: _____ | |

CT MERCHANDISER SERIES

CT96HC Countertop Refrigerator
Hydrocarbon Series

MODELS:
CT96HC-1-B



CT96HC-1-B

OPTIONS & ACCESSORIES

- ☐ Custom Graphics
- ☐ Wire Shelves

1 Year Parts/Labor Warranty
Additional 4 Year Compressor Part Only

CABINET CONSTRUCTION

- Exterior is heavy duty black textured steel
- Black plastic door frames with locks standard
- Interior is heavy duty white epoxy coated steel
- Full electronic control with display
- LED light standard
- Double pane tempered glass
- Door locks
- 3 Epoxy coated shelves standard
- 2 Top shelves are adjustable
- Maintains product temperature between 36°F and 38°F
- 6' 6" Cord and plug set included

REFRIGERATION SYSTEM

- Refrigeration system uses R600a refrigerant to comply with all environmental concerns
- Automatic, non-electric defrost
- Epoxy coated evaporator coil

CT96HC Countertop Refrigerator: Merchandiser Series



3779 Champion Blvd., Winston-Salem, NC 27105
1-888-845-9800 Fax: 1-336-245-6453
Beverage-Air.com sales@bevair.com



BEVERAGE-AIR

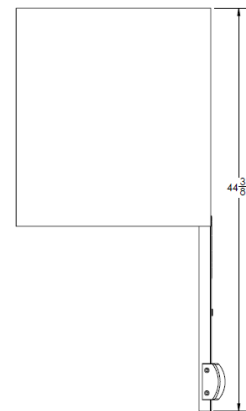
| MODEL | CT96HC-1-B |
|----------------------------------|--------------------------------|
| EXTERNAL DIMENSIONAL DATA | |
| Width Overall | 21 3/8" |
| Depth Overall with Handle | 25 1/2" |
| Height Overall | 37 1/2" |
| Number of Doors | 1 |
| Depth with Door Open 90 ° | 44 3/8" |
| Door Opening | 18" x 31 1/4" |
| INTERNAL DIMENSIONAL DATA | |
| NET Capacity (cubic ft.) | 5.9 |
| Internal Width Overall (in) | 18 1/4" |
| Internal Depth Useable (in) | Upper 19 1/8" Lower 12 1/4" |
| Internal Height Overall (in) | 31 5/8" |
| Internal Height Useable (in) | 24 1/8" |
| Number of Shelves | 3 |
| ELECTRICAL DATA | |
| Full Load Amperes 115/60/1 | 1.3 |
| REFRIGERATION DATA | |
| Horsepower | 1/5 |
| WEIGHT DATA | |
| Gross Weight (kgs) | 120 lbs |
| Height - Crated | 45" |
| Width - Crated | 23.5" |
| Depth - Crated | 27" |

Countertop Refrigerator

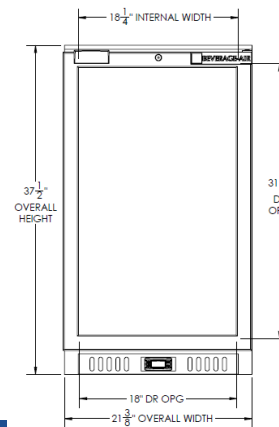
Models: CT96HC-1-B

Model Views

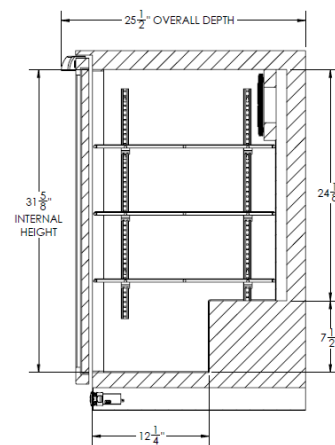
Plan View



Elevation View



Side View



ELECTRICAL CONNECTION



115/60/1
NEMA-5-15P

Units pre-wired at factory and include 6' 6" long cord and plug set.



an Ali Group Company



The Spirit of Excellence

3779 Champion Blvd., Winston-Salem, NC 27105
1-888-845-9800 Fax: 1-336-245-6453
Beverage-Air.com sales@bevair.com