



Model: \_\_\_\_\_ Item #: \_\_\_\_\_ Date: \_\_\_\_\_  
Project: \_\_\_\_\_ Qty: \_\_\_\_\_ Approved By: \_\_\_\_\_

## Hand Sinks w/ Side Splashes

## HAND SINKS

### Product Images

#### HS-2-LS/RS

16" Wide w/ Side  
Splash on one side



HS-2-RS shown

#### HS-9-LS/RS

12" Wide w/ Side  
Splash on one side



HS-9-RS shown

#### HS-5

16" Wide w/ Side  
Splashes & P-Trap



#### HS-23

16" Wide w/  
Side Splashes &  
Support Brackets



#### HS-26L

16" Wide w/  
Side Splashes



#### HS-30L

12" Wide w/  
Side Splashes



#### HS-32

12" Wide w/ Side Splashes &  
Soap & Towel Dispenser



#### HS-33

16" Wide w/ Side Splashes &  
Soap & Towel Dispenser



### Standard Features

<b>Fabrication</b>	20 gauge stainless steel
<b>Bowl</b>	9-3/4"W x 12-1/2"L x 6" Deep drawn bowl with stamped rim to prevent spillage
<b>Wall Mount Bracket</b>	Mount top of bracket 41-1/2" from floor. Offset design for added strength.
<b>Faucet</b>	4" center wall mount faucet included on most models
<b>Drain</b>	Stainless steel
<b>Drain with Overflow</b>	Stainless Steel with plastic overflow tube and inlet
<b>Plumbing</b>	<ul style="list-style-type: none"><li>• 1/2" IPS hot and cold water.</li><li>• 1-1/2" IPS drain outlet.</li><li>• Install at 34" working height.</li><li>• 1/2" faucet supply 27-1/2" from floor.</li><li>• Install hot &amp; cold water stops 27-1/2" from floor.</li><li>• Install 1-1/2" drain line 24-1/4" from floor.</li></ul>
<b>Lead Free</b>	Products are certified to NSF/ANSI 61 and 372 and conforms with the lead content requirements for lead free plumbing as defined by the U.S. Safe Drinking Water Act.

### Optional Accessories

<b>21-311L</b>	Wrist Blade Handle Kit
<b>H-100</b>	Chrome Plated 1-1/2" IPS P-Trap
<b>H-104</b>	Wall Mount Soap Dispenser
<b>H-105</b>	Wall Mount Towel Dispenser
<b>H-106L</b>	Left Side Splash
<b>H-106R</b>	Right Side Splash
<b>H-107</b>	Left and Right Side Splashes
<b>H-108</b>	Stainless Steel Skirt
<b>H-109</b>	Upgrade: Royal Series Faucet
<b>H-110</b>	Side Support Brackets
<b>H-111</b>	Soap & Towel Dispenser



Certified to  
NSF/ANSI 61-G



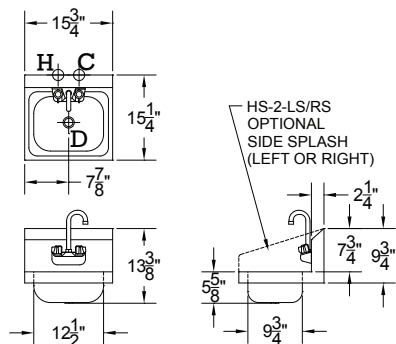
Model: \_\_\_\_\_ Item #: \_\_\_\_\_ Date: \_\_\_\_\_

Project: \_\_\_\_\_ Qty: \_\_\_\_\_ Approved By: \_\_\_\_\_

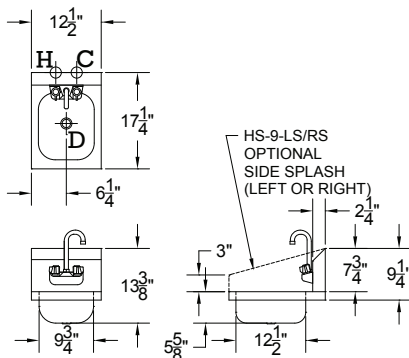
## Hand Sinks w/ Side Splashes

## HAND SINKS

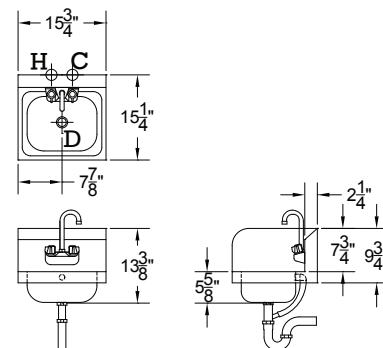
**HS-2-LS/RS**



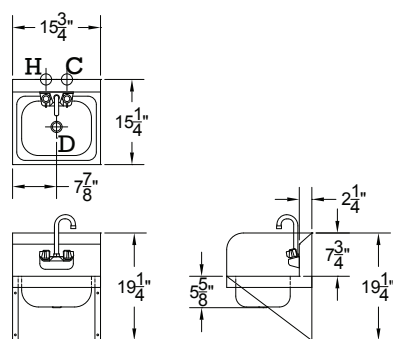
**HS-9-LS/RS**



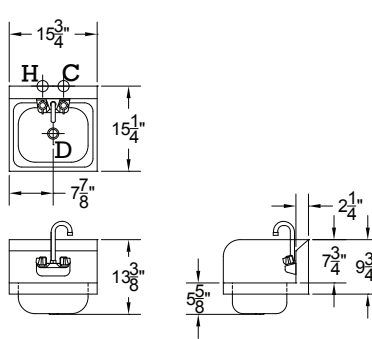
**HS-5**



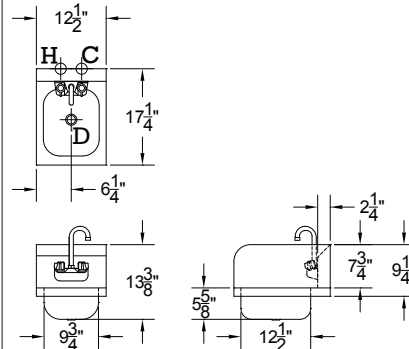
**HS-23**



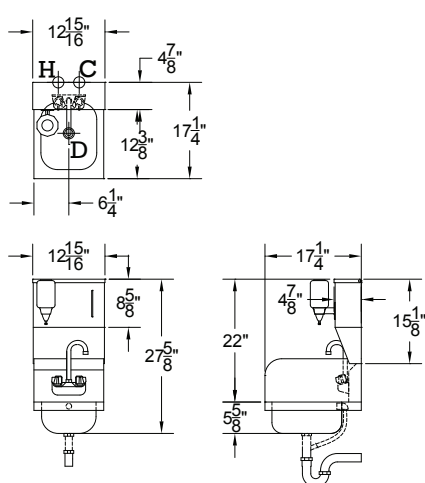
**HS-26L**



**HS-30L**



**HS-32**



**HS-33**

