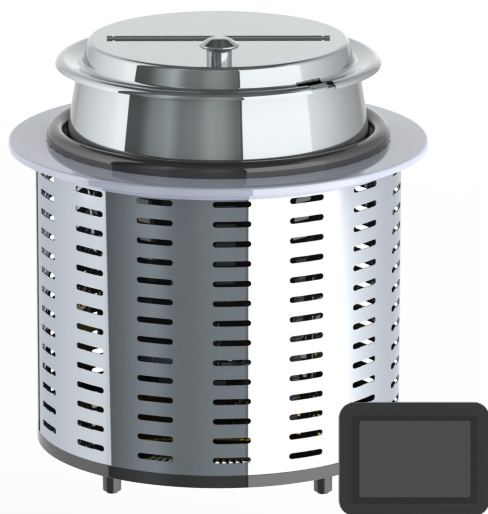




7 qt. Drop-in SinAqua™ Souper



PERFORMANCE

The SinAqua™ Souper is a drop-in countertop unit from CookTek used for rethermalizing food and precision holding. Employing a forward-thinking design and high-contrast, easy-to-use capacitive touch control, the SinAqua™ Souper can take liquid foods from an unfrozen, chilled state through the food safety danger zone in as little as 45 minutes.[†] After rethermalization, food is held at a precise temperature within a selectable range of 140–200°F / 60–95°C. Utilizing CookTek inductive heating technology, the SinAqua™ Souper consistently heats food without scorching and holds food twice as long as steam wells, while using less than half the energy. The SinAqua™ Souper eliminates maintenance and plumbing associated with traditional soup warmers.

[†]Requires stirring

Project _____

Item No. _____

Quantity _____

FEATURES

- SinAqua™ (waterless) holding and rethermalization
- 800 watts induction heating
- User selectable precision hold and rethermalization functions
- Holding temperatures range from 140°–200°F / 60°–95°C
- Rethermalizing temperatures range from 170°–200°F / 75°–95°C
- Programmable stir notification – defaults to four minutes when rethermalizing and 15 minutes when holding
- Pan compensation technology allows for use with magnetic and non-magnetic soup tureens^{††}
- Active dry-pan protection prevents users from unintentionally damaging the unit
- Highly visible and durable capacitive touch user interface
- Audible and visual cues
- Includes one 7 qt. 18/8 stainless steel soup tureen and lid for maximum performance, durability, and corrosion resistance
- Spun aluminum exterior construction with high-gloss polycarbonate adapter ring (stainless steel adapter ring sold separately)
- 6 ft. 5-pin micro USB patch cable from unit to control box included
- Includes plug and cord (6 ft. nominal)
- One-year limited warranty (U.S. and Canada only)

CERTIFICATIONS



^{††}The SinAqua Soupers are designed to be used exclusively with CookTek-specific tureens and lids. The compatible options include:

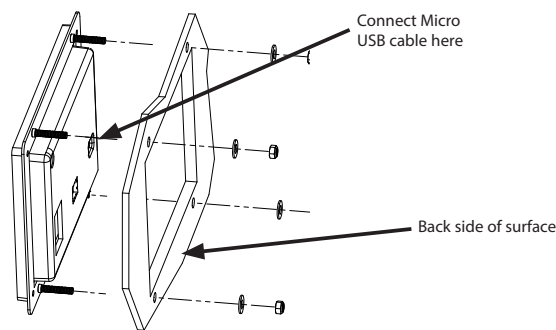
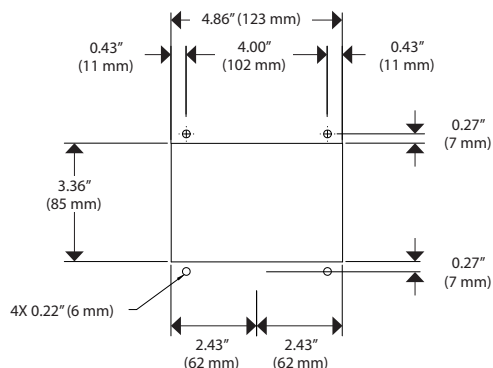
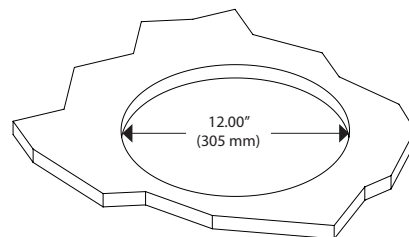
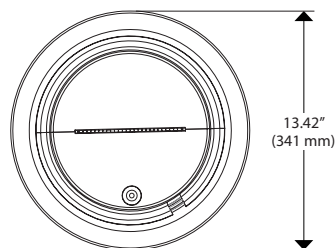
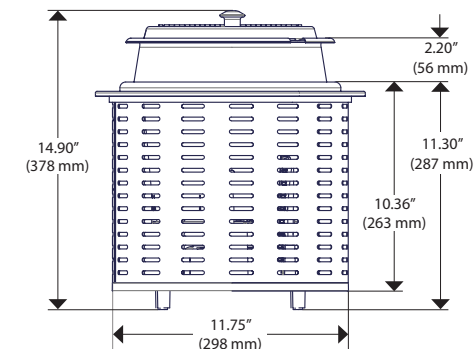
- 4 qt (302478)

- 7 qt (302409)

- 11 qt (302408)

It is the owner and installer's responsibility to comply with all local codes. CookTek reserves the right to make substitutions of components or change specifications without prior notice.

7 qt. Drop-in SinAqua™ Souper



DIMENSIONS			
Unit Height	14.90"	378 mm	
Diameter	13.42"	341 mm	
Cutout Diameter	12.00"	305 mm	
Weight	11.92 lb.	5.41 kg	
Max Ambient Temperature	131°F	55°C	
SHIPPING INFORMATION			
Packaged Height	17.72"	450 mm	
Packaged Width	16.54"	420 mm	
Packaged Depth	16.54"	420 mm	
Packaged Weight	13.45 lb.	6.1 kg	
Item Class	1405001104		
ELECTRICAL SPECIFICATIONS (SINGLE PHASE)			
MODEL SASD081-7			
UNITED STATES/CANADA	677101	100–120 V, 50/60 Hz, 7A, 800 W	NEMA 5-15P
MODEL SASD082-7			
UK/SAUDI ARABIA	677202	200–240 V, 50/60 Hz, 4 A, 800 W	BS1363, 13A, 230V
INTERNATIONAL	677203	200–240 V, 50/60 Hz, 4 A, 800 W	CEE 7/7 Schuko, 16A, 250V
AUSTRALIA	677204	200–240 V, 50/60 Hz, 4 A, 800 W	AS/NZS 3112:2000, 10A, 250V
JAPAN	677206	200–240 V, 50/60 Hz, 4 A, 800 W	N/A
SOUTH AFRICA	677207	200–240 V, 50/60 Hz, 4 A, 800 W	BS 546, 16A, 250V
ISRAEL	677208	200–240 V, 50/60 Hz, 4 A, 800 W	SI 32, 16A, 250V



NEMA 5-15P


AS/NZS 3112:2000,
10A, 250V


NEMA 6-20P



BS 546, 16A, 250V



BS1363, 13A, 230V


CEE 7/7 Schuko,
16A, 250V


SI 32, 16A, 250V

Global Operations

2801 Trade Center Drive / Carrollton, Texas 75007 USA
US: 800.908.8726 / International: +1 214.379.6000
Fax: +1 214.379.6073 / www.cooktek.com