

Refrigerated Service Case



MODEL SHOWN: HMG2653R

- ☐ HMG2653R
- ☐ HMG3953R
- ☐ HMG5153R
- ☐ HMG6353R
- ☐ HMG7553R

Lengths include end panels

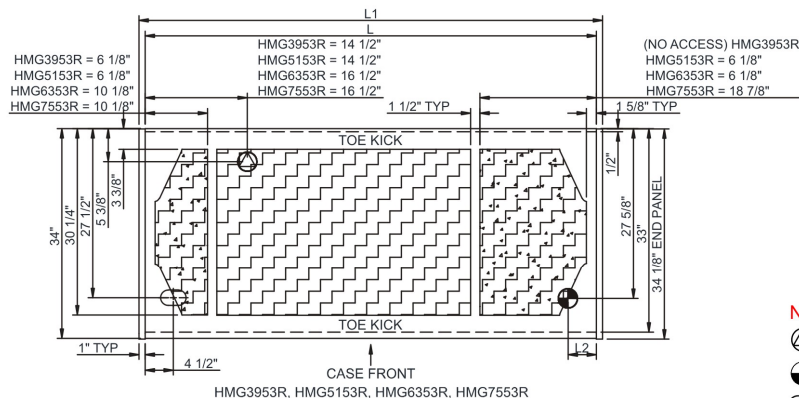
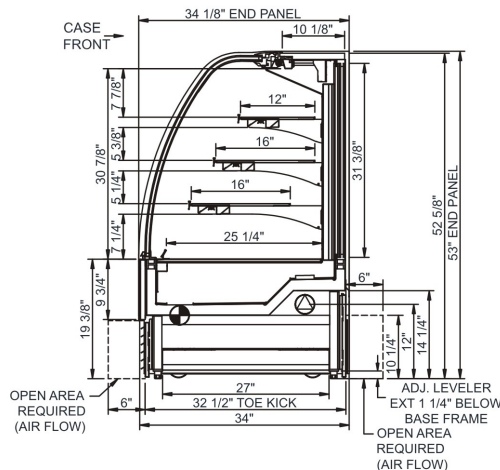
- 26-3/4"L x 34-1/8"D x 53"H
- 38-3/4"L x 34-1/8"D x 53"H
- 50-3/4"L x 34-1/8"D x 53"H
- 62-5/8"L x 34-1/8"D x 53"H
- 75-1/8"L x 34-1/8"D x 53"H

STANDARD FEATURES

- Breeze™ w/EnergyWise s/c refrigeration
- Clear glass shelves, lighted (LED 3500K)
- Compressor air rear intake, front discharge. Toe kick cannot be blocked
- Condensate pan (self-contained refrig. only)
- Curved double pane, lift-up front glass w/o lock
- Flat front panel
- Integrated average product temperature of 40°F or less
- LED 3500K top & shelf lights
- One year parts & labor; 5 year compressor warranty
- Rear sliding doors w/o lock (26" model swinging)
- Shelving removable and adjustable on 1" centers

Features	Standard	Options
EXTERIOR COLOR	<input type="checkbox"/> Laminated (non-premium) Confirm pattern/grain direction	<input type="checkbox"/> Laminated (premium) Confirm pattern/grain direction <input type="checkbox"/> Stainless steel (includes rear of case)
INTERIOR COLOR	<input type="checkbox"/> Black	<input type="checkbox"/> Stainless steel <input type="checkbox"/> White
REAR EXTERIOR COLOR	<input type="checkbox"/> Painted - White	<input type="checkbox"/> Painted - Black <input type="checkbox"/> Stainless steel (w/stainless ext. only)
TRIM COLOR	<input type="checkbox"/> Black	<input type="checkbox"/> Silver
BASE	<input type="checkbox"/> Levelers	<input type="checkbox"/> 6"H legs <input type="checkbox"/> Casters (n/a with remote)
END PANEL LEFT	<input type="checkbox"/> Full end panel w/mirror interior	<input type="checkbox"/> Cutaway with glass - cases cannot be joined w/o end panels
END PANEL RIGHT	<input type="checkbox"/> Full end panel w/mirror interior	<input type="checkbox"/> Cutaway with glass - cases cannot be joined w/o end panels
UPPER REAR	<input type="checkbox"/> Clear glass rear sliding doors w/o lock (26" model swinging) (specify LH or RH hinge)	<input type="checkbox"/> Reflective glass rear sliding doors w/o lock (26" model swinging) (specify LH or RH hinge)
ELECTRICAL CONNECT	<input type="checkbox"/> 6' straight blade power cord (self-cont.)	<input type="checkbox"/> 6' locking power cord (self-cont.) <input type="checkbox"/> Electrical leads (remote)
REFRIGERATION	<input type="checkbox"/> Breeze™ w/EnergyWise s/c refrigeration	<input type="checkbox"/> Note: Remote doesn't incl Conds unit. Floor drain reqd. <input type="checkbox"/> Remote w/thermostat, solenoid & TXV
MISCELLANEOUS		<input type="checkbox"/> Front glass lock <input type="checkbox"/> Rear door lock <input type="checkbox"/> Second year parts & labor warranty (excludes compressor)
ACCESSORIES		<input type="checkbox"/> Clean Sweep® coil cleaner (n/a w/remote) <input type="checkbox"/> Price tag molding (matches interior color)

Product Specifications



	ELECTRICAL JUNCTION BOX (SUPPLIED WITH 6" LEADS OR POWER CORD).		REMOTE FLOOR SINK & UTILITIES ACCESS AREA.
	LOCATION OF DRAIN TUBE FOR REMOTE REF. ONLY (SUPPLIED WITH 3/4" OR 1 1/2" PVC TUBE).		SELF-CONTAINED CASE SERVICE ACCESS AREA.
	REFRIGERATION LINE CONNECTION.		DRY CASE SERVICE ACCESS AREA.

Model Technical Specifications																
Model	L"	L1"	L2"	System Circuit Volts			Phs	Freq	Amps ***	Watts	Wires	NEMA Plug	SST	Conv. Rack BTUH	Para. Rack BTUH	Est Wt
HMG2653R	N/A	26.75	4.75	Remote(Type I)	Circuit #1	110-120	1	60	1.48	157	2+G	Leads Multiple	20.00	1521	1408	700
				Self-Contained	Circuit #1	110-120	1	60	11.34	1,118	2+G	5-15P or L5-15P	N/A	N/A	N/A	
HMG3953R	N/A	38.75	4.75	Remote(Type I)	Circuit #1	110-120	1	60	1.35	141	2+G	Leads Multiple	20.00	1793	1660	850
				Self-Contained	Circuit #1	110-120	1	60	11.31	1,117	2+G	5-15P or L5-15P	N/A	N/A	N/A	
HMG5153R	N/A	50.75	4.75	Remote(Type I)	Circuit #1	110-120	1	60	2.31	236	2+G	Leads Multiple	20.00	1944	1800	950
				Self-Contained	Circuit #1	110-120	1	60	12.00	1,297	2+G	5-15P or L5-15P	N/A	N/A	N/A	
HMG6353R	N/A	62.63	4.75	Remote(Type I)	Circuit #1	110-120	1	60	2.69	248	2+G	Leads Multiple	20.00	2290	2120	1,150
				Self-Contained	Circuit #1	110-120	1	60	15.71	1,477	2+G	5-20P or L5-20P	N/A	N/A	N/A	
HMG7553R	N/A	75.13	4.75	Remote(Type I)	Circuit #1	110-120	1	60	2.72	286	2+G	Leads Multiple	20.00	2851	2640	1,200
				Self-Contained	Circuit #1	110-120	1	60	16.00	1,641	2+G	5-20P or L5-20P	N/A	N/A	N/A	

*** Does not include electric defrost on freezer models.

Regulatory Approvals:

All Models	<p>Accordance with AHRI Std 1200</p> <p>ETL Listed to UL 471</p> <p>ETL Listed to CAN/CSA 22.2 No. 120</p> <p>ETL Sanitation to NSF 7</p>
------------	---



In Accordance with
AHRI Std 1200

DOE 2017
Energy Efficiency
Compliant

Important Notes:

- 1) ELECTRICAL NOTE: If GFCI is required, a GFCI breaker MUST be used in lieu of a GFCI receptacle
- 2) 35" minimum door entry clearance required (without shipping skid).
- 3) Units are supplied with levelers. They must be adjusted during installation to ensure the unit is level and plumb.
Dimensions reflect levelers extended 1 1/4".

⚠ WARNING: This product can expose you to chemicals, including Urethane (Ethyl Carbamate), which are known to the State of California to cause cancer and birth defects or other reproductive harm. For more information go to www.P65Warnings.ca.gov.