

Refrigerated Self-Service Multi-Purpose Island - 3' Case Depth



MODEL SHOWN: MI32R

- ☐ MI32R
- ☐ MI33R
- ☐ MI36R

Lengths include end panels
26-1/8"L x 36-1/2"D x 39-1/8"H
38-1/8"L x 36-1/2"D x 39-1/8"H
74-1/8"L x 36-1/2"D x 39-1/8"H

STANDARD FEATURES

- Breeze™ w/EnergyWise s/c refrigeration
- 1" bumper, double strip (specify color)
- Blue Fin coated coil
- Casters
- Compressor air intake in one side & out other side. All louvered panels cannot be blocked
- Corrosion resistant stainless steel tub & fan shroud
- Integrated average product temperature adjustable from 38°F to 40°F
- NOTE: Maximum load height is 8-1/4" up from deck
- NOTE: Upper trim matches exterior color
- One year parts & labor; 5 year compressor warranty
- Removable deck pans provide complete access to evaporator coil & refrigeration connections
- Solid metal deck
- Straight insulated glass ends

Features	Standard	Options
EXTERIOR COLOR	<input type="checkbox"/> Laminated (non-premium) Confirm pattern/grain direction	<input type="checkbox"/> Laminated (premium) Confirm pattern/grain direction <input type="checkbox"/> Stainless steel (includes lower base)
INTERIOR COLOR	<input type="checkbox"/> Black	<input type="checkbox"/> Stainless steel
TRIM COLOR	<input type="checkbox"/> Black	<input type="checkbox"/> Stainless steel
BASE	<input type="checkbox"/> Black	<input type="checkbox"/> Stainless steel (w/stainless ext. only)
ELECTRICAL CONNECT	<input type="checkbox"/> 6' straight blade power cord (self-cont.)	<input type="checkbox"/> 6' locking power cord (self-cont.)
MISCELLANEOUS		<input type="checkbox"/> Clean Sweep® coil cleaner (n/a w/remote) <input type="checkbox"/> Second year parts & labor warranty (excludes compressor)

Option Notes: 1 - n/a on models MI32R & MI33R

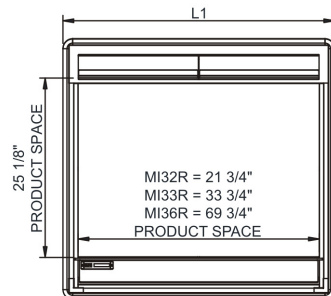
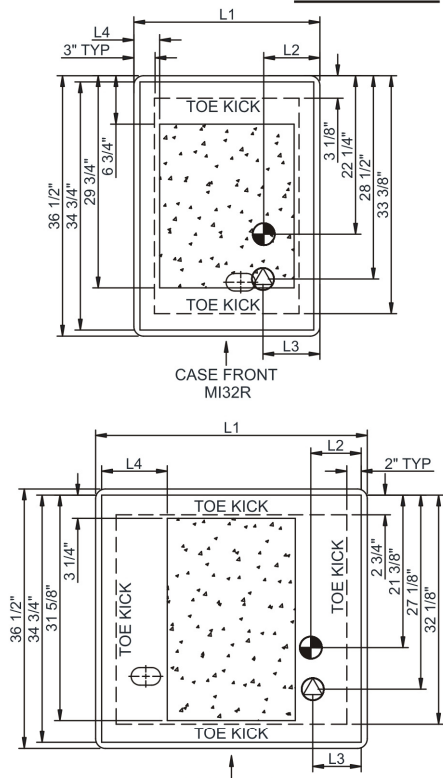
Oasis®

Product Specifications

Intended Environment: Type I - Designed to operate in ambient conditions of 75°F with 55% relative humidity unless noted otherwise in system information below.

Zone	Intended Product To Be Displayed	Warmest Avg Prod Temp ° F
1	Packaged raw meat (38°) Packaged produce/deli (40°)	38-40

PLAN VIEW



TOP VIEW

	"L3"	"L4"
MI32R	8"	3 5/8"
MI33R	7"	6 3/4"
MI36R	7"	8 3/4"

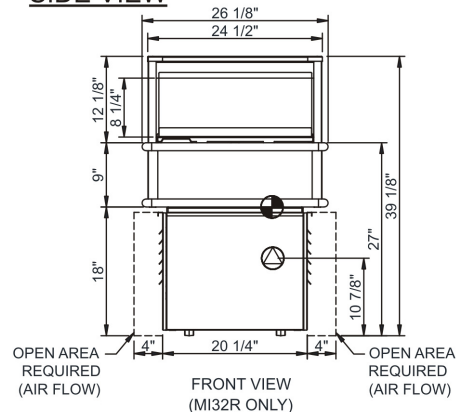
NOTE: ALL DIMENSIONS APPROXIMATE

- ELECTRICAL JUNCTION BOX (SUPPLIED WITH 6" LEADS OR POWER CORD).
- LOCATION OF DRAIN TUBE FOR REMOTE REF. ONLY (SUPPLIED WITH 3/4" OR 1 1/2" PVC TUBE).

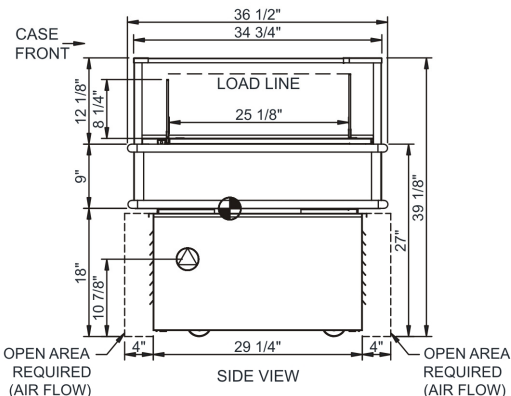
- REFRIGERATION LINE CONNECTION.
- REMOTE FLOOR SINK & UTILITIES ACCESS AREA.

- SELF-CONTAINED CASE SERVICE ACCESS AREA.
- DRY CASE SERVICE ACCESS AREA.

SIDE VIEW



FRONT VIEW (MI32R ONLY)



SIDE VIEW

Model Technical Specifications

Model	L"	L1"	L2"	System	Circuit	Volts	Phs	Freq	Amps ***	Watts	Wires	NEMA Plug	SST	Conv. Rack BTUH	Para. Rack BTUH	Est Wt
MI32R	N/A	26.13	7.00	Self-Contained	Circuit #1	110-120	1	60	11.04	1,014	N/A	5-15P or L5-15P	N/A	N/A	N/A	650
MI33R	N/A	38.13	7.00	Self-Contained	Circuit #1	110-120	1	60	9.35	801	2+G	5-15P or L5-15P	N/A	N/A	N/A	750
MI36R	N/A	74.13	7.00	Self-Contained	Circuit #1	110-120	1	60	15.87	1,574	2+G	5-20P or L5-20P	N/A	N/A	N/A	950

*** Does not include electric defrost on freezer models.

Important Notes:

⚠ WARNING: This product can expose you to chemicals, including Urethane (Ethyl Carbamate), which are known to the State of California to cause cancer and birth defects or other reproductive harm. For more information go to www.P65Warnings.ca.gov.

Regulatory Approvals:

All Models
 Accordance with AHRI Std 1200
 ETL Listed to UL 471
 ETL Listed to CAN/CSA 22.2 No. 120
 ETL Sanitation to NSF 7



In Accordance with
AHRI Std 1200

DOE 2017
 Energy Efficiency
 Compliant

888 E. Porter Rd.
 Muskegon, MI 49441
 Ph. 231-798-8888
 Fx. 231-798-4960
www.structuralconcepts.com

Note: Information is subject to change at any time.
 Visit www.structuralconcepts.com for the most current specs.

Revised 9/6/2019

21591583