

Refrigerated Self-Service Case



MODEL SHOWN: HMO5153R

- ☐ HMO2653R
- ☐ HMO3953R
- ☐ HMO5153R
- ☐ HMO6353R
- ☐ HMO7553R

Lengths include end panels
 26-3/4"L x 34-1/8"D x 53"H
 38-3/4"L x 34-1/8"D x 53"H
 50-3/4"L x 34-1/8"D x 53"H
 62-5/8"L x 34-1/8"D x 53"H
 75-1/8"L x 34-1/8"D x 53"H

STANDARD FEATURES

- Breeze™ w/EnergyWise s/c refrigeration
- Clear glass shelves, lighted (LED 3500K)
- Compressor air rear intake, front discharge. Toe kick cannot be blocked
- Condensate pan (self-contained refig. only)
- Flat front panel
- Integrated average product temperature of 40°F or less
- LED 3500K top & shelf lights
- One year parts & labor; 5 year compressor warranty
- Open reach-in front
- Shelving removable and adjustable on 1" centers
- Upper & lower rear areas white

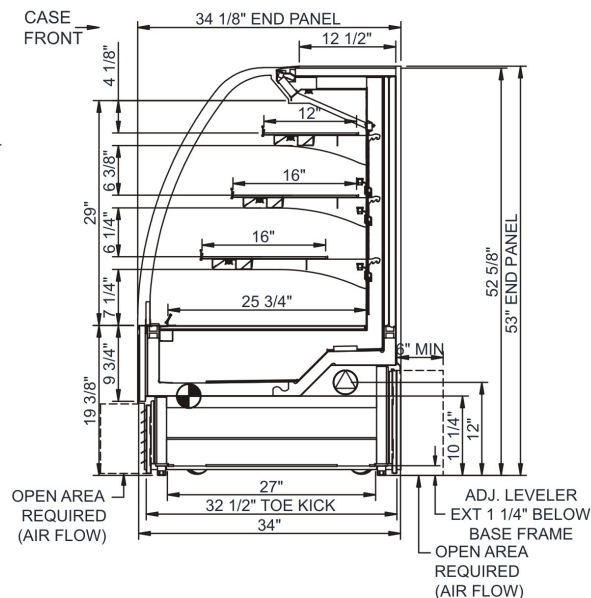
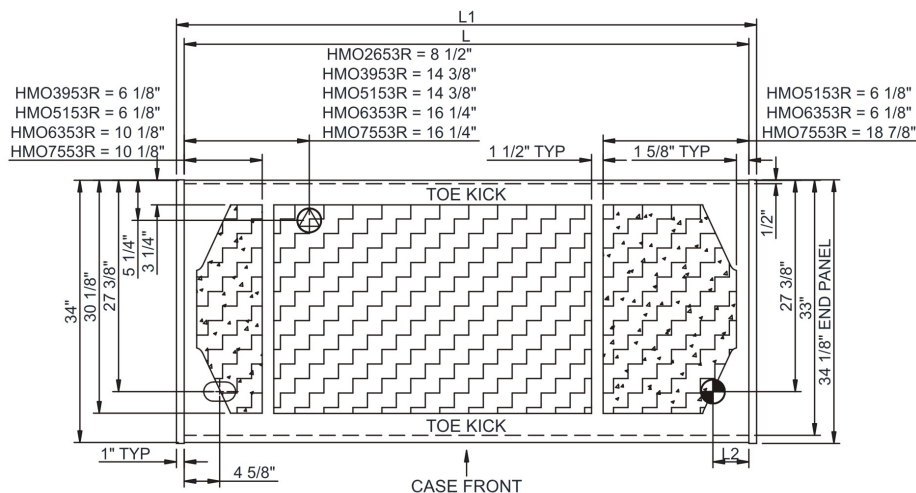
Features	Standard	Options
EXTERIOR COLOR	<input type="checkbox"/> Laminated (non-premium) Confirm pattern/grain direction	<input type="checkbox"/> Laminated (premium) Confirm pattern/grain direction <input type="checkbox"/> Stainless steel (includes rear of case)
INTERIOR COLOR	<input type="checkbox"/> Black	<input type="checkbox"/> Stainless steel <input type="checkbox"/> White
REAR EXTERIOR COLOR	<input type="checkbox"/> Painted - White	<input type="checkbox"/> Painted - Black <input type="checkbox"/> Stainless steel (w/stainless ext. only)
TRIM COLOR	<input type="checkbox"/> Black	<input type="checkbox"/> Silver
BASE	<input type="checkbox"/> Levelers	<input type="checkbox"/> 6"H legs <input type="checkbox"/> Casters (n/a with remote)
END PANEL LEFT	<input type="checkbox"/> Full end panel w/mirror interior	<input type="checkbox"/> Cutaway with glass - cases cannot be joined w/o end panels
END PANEL RIGHT	<input type="checkbox"/> Full end panel w/mirror interior	<input type="checkbox"/> Cutaway with glass - cases cannot be joined w/o end panels
UPPER REAR	<input type="checkbox"/> Solid back panel	<input type="checkbox"/> ¹ Clear glass rear sliding doors w/o lock <input type="checkbox"/> ² Solid rear swinging door(s) w/o lock (specify hinge LH or RH)
ELECTRICAL CONNECT	<input type="checkbox"/> 6' straight blade power cord (self-cont.)	<input type="checkbox"/> 6' locking power cord (self-cont.) <input type="checkbox"/> Electrical leads (remote)
REFRIGERATION	<input type="checkbox"/> Breeze™ w/EnergyWise s/c refrigeration	<input type="checkbox"/> Note: Remote doesn't incl Conds unit. Floor drain reqd. <input type="checkbox"/> Remote w/thermostat, solenoid & TXV
MISCELLANEOUS		<input type="checkbox"/> Rear door lock <input type="checkbox"/> Second year parts & labor warranty (excludes compressor)
ACCESSORIES		<input type="checkbox"/> Clean Sweep® coil cleaner (n/a w/remote) <input type="checkbox"/> Night curtain, retractable, non-locking <input type="checkbox"/> Price tag molding (matches interior color) <input type="checkbox"/> Removable wire security cover, locking

Option Notes: 1 - HMO3953R; HMO5153R; HMO6353R; HMO7553R
 2 - HMO2653R




Product Specifications

PLAN VIEW

SIDE VIEW



NOTE: ALL DIMENSIONS APPROXIMATE

- | | | | | | |
|---|---|---|---|---|--|
|  | ELECTRICAL JUNCTION BOX
(SUPPLIED WITH 6" LEADS OR POWER CORD). |  | REFRIGERATION LINE CONNECTION. |  | SELF-CONTAINED CASE SERVICE ACCESS AREA. |
|  | LOCATION OF DRAIN TUBE FOR REMOTE REF.
ONLY (SUPPLIED WITH 3/4" OR 1 1/2" PVC TUBE). |  | REMOTE FLOOR SINK & UTILITIES
ACCESS AREA. |  | DRY CASE SERVICE ACCESS AREA. |

Model Technical Specifications

Model	L"	L1"	L2"	System Circuit Volts			Phs	Freq	Amps ***	Watts	Wires	NEMA Plug	SST	Conv. Rack BTUH	Para. Rack BTUH	Est Wt
HMO2653R	N/A	26.75	4.88	Remote(Type I)	Circuit #1	110-120	1	60	1.11	116	2+G	Leads Multiple	24.00	2566	2376	650
				Self-Contained	Circuit #1	110-120	1	60	12.00	1,356	2+G	5-15P or L5-15P	N/A	N/A	N/A	
HMO3953R	N/A	38.75	4.88	Remote(Type I)	Circuit #1	110-120	1	60	1.20	131	2+G	Leads Multiple	24.00	3758	3480	800
				Self-Contained	Circuit #1	110-120	1	60	14.62	1,313	2+G	5-20P or L5-20P	N/A	N/A	N/A	
HMO5153R	N/A	50.75	4.88	Remote(Type I)	Circuit #1	110-120	1	60	2.03	210	2+G	Leads Multiple	24.00	4730	4380	900
				Self-Contained	Circuit #1	110-120	1	60	16.00	1,707	2+G	5-20P or L5-20P	N/A	N/A	N/A	
HMO6353R	N/A	62.63	4.88	Remote(Type I)	Circuit #1	110-120	1	60	1.90	110	2+G	Leads Multiple	20.00	5702	5280	1,100
				Self-Contained	Circuit #1	208-240	1	60	11.17	1,849	2+G	6-15P	N/A	N/A	N/A	
HMO7553R	N/A	75.13	4.63	Remote(Type I)	Circuit #1	110-120	1	60	3.04	317	2+G	Leads Multiple	20.00	6912	6400	1,150
				Self-Contained	Circuit #1	120/230V	1	60	12.00	2,212	3+G	14-20P or L14-20P	N/A	N/A	N/A	

*** Does not include electric defrost on freezer models.

Regulatory Approvals:

All Models	<p>Accordance with AHRI Std 1200</p> <p>ETL Listed to UL 471</p> <p>ETL Listed to CAN/CSA 22.2 No. 120</p> <p>ETL Sanitation to NSF 7</p>
------------	---



In Accordance with
AHRI Std 1200



Important Notes:

- 1) ELECTRICAL NOTE: If GFCI is required, a GFCI breaker MUST be used in lieu of a GFCI receptacle
- 2) Units are supplied with levelers. They must be adjusted during installation to ensure the unit is level and plum.
- 3) 35" Minimum door entry clearance required (without shipping skid).

⚠ WARNING: This product can expose you to chemicals, including Urethane (Ethyl Carbamate), which are known to the State of California to cause cancer and birth defects or other reproductive harm. For more information go to www.P65Warnings.ca.gov.