

Self-Contained Back Bar Refrigeration with Mixing Doors

Refrigeration



BS84R-S-D2-LS-RK shown

Models

Model	Length	Doors	Weight	Amps	HP
BS36	36"	1-Door	285 lbs.	1.7	1/5
BS60	60"	2-Door	360 lbs.	2.2	1/4
BS84	84"	3-Door	480 lbs.	2.7	1/3
BS108	108"	4-Door	525 lbs.	2.8	1/3

Specifications

Electrical	<ul style="list-style-type: none"> 115 V, 1 Phase, 60 Hz Furnished with 8'-0" plug-in cord, which exits left or right rear of cooler NEMA 5-15P plug configuration Dedicated 15 amp circuit recommended
	<ul style="list-style-type: none"> 1 Door Units (36"): 1.7 amps, 1/5 HP 2 Door Units (60"): 2.2 amps, 1/4 HP 3 Door Units (84"): 2.7 amps, 1/3 HP 4 Door Units (108"): 2.8 amps, 1/3 HP
Refrigeration	<ul style="list-style-type: none"> R290 Hydrocarbon Refrigerant 30°F - 40°F operating range Digital thermostat on front grille
Plumbing	<ul style="list-style-type: none"> No drain required Condensate evaporator pan included
Insulation	<ul style="list-style-type: none"> 2" thick foamed-in-place polyurethane
Interior	<ul style="list-style-type: none"> 20 gauge stainless steel with coved corners NSF epoxy coated durable shelves - one bottom and two adjustable shelves per door (Does not include wine drawer selections) Integrated divider prevents bottles from falling into sliding drawer

Standard Features

- 35" High without Top, 36" High with 1" Optional Top
- 24" Front to Back Depth (25" with Top)
- Coved corner stainless steel interior
- Heavy duty Self-Closing 24"W Doors
- Stainless steel door handles with built-in locks
- Digital thermostat
- Built-in Cool White LED Lighting (7000K)
- DynamicChill 360° Technology
- Heated mullion to minimize condensation
- Optional dual zone temperature control (60" & 84" only)
- Approved for NSF 7 Open Food Storage
- Pre-drilled bottom for optional legs or casters (uses 1/4-20 self tapping 1/2"L screw)
- Eco-friendly Refrigerant and Insulation
- 5-Year Compressor Warranty
- 1-Year Parts & Labor Warranty

Exterior	<ul style="list-style-type: none"> Sides: 20 gauge stainless steel Front: 20 gauge stainless steel, black vinyl, or glass Back: 20 gauge galvanized steel
	<ul style="list-style-type: none"> Top: 20 gauge galvanized steel with option of 1" stainless steel top Available without a finished top for integrated bar installations.
Doors	<ul style="list-style-type: none"> Self-closing 24"W doors available in black vinyl, stainless steel, glass with black vinyl, or glass with stainless steel 19-3/4"W x 29-11/16"H door opening
Sliding Drawers	<ul style="list-style-type: none"> All stainless steel with built-in locks One 11" interior height drawer (15-1/2" overall) One 13-3/4" internal height drawer (18" overall) 18" drawer fits standard sized wine bottles standing up Soft stop technology Load Capacity: up to 175 lbs (80 kg) full extension



This equipment is intended for the storage and display of non-potentially hazardous bottle or canned products only.

This equipment is intended for use in an area where the ambient temperature typically does not exceed 75 °F.



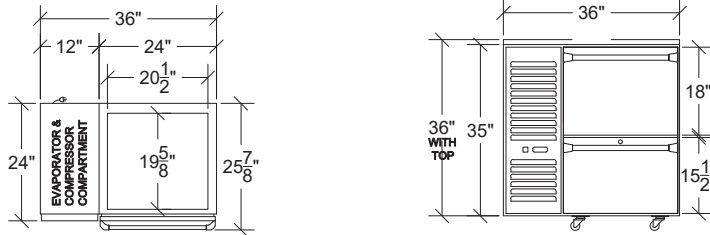
Sliding Drawers Available

Self-Contained Back Bar Refrigeration with Mixing Doors

Refrigeration

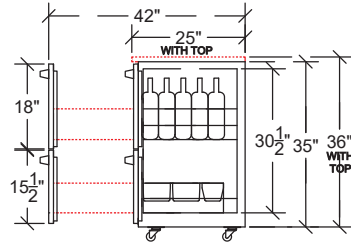
One Door (36")

Models beginning BS36



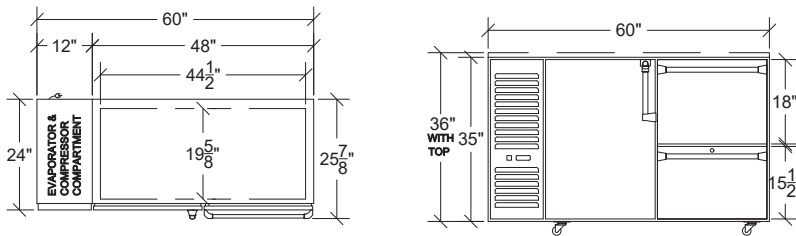
D1 Door Style Side View

18" Drawer on Top, 15-1/2" Drawer on Bottom



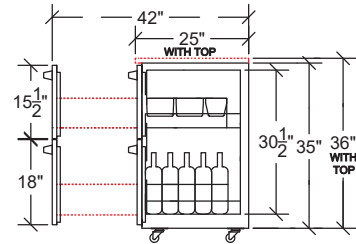
Two Door (60")

Models beginning BS60



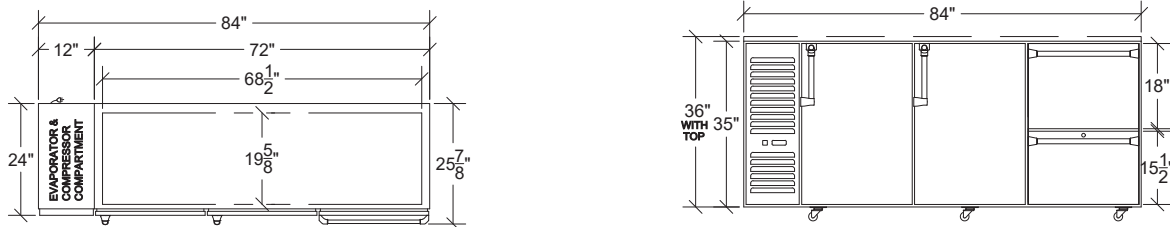
D2 Door Style Side View

15-1/2" Drawer on Top, 18" Drawer on Bottom



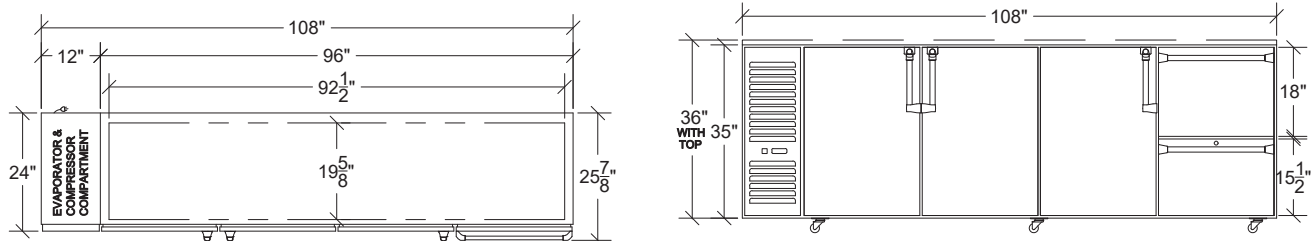
Three Door (84")

Models beginning BS84



Four Door (108")

Models beginning BS108



Note: Optional casters and legs available in several heights

Self-Contained Back Bar Refrigeration with Mixing Doors

Refrigeration

Mixing Door Refrigeration Configuration Table

Use this configuration table to create your back bar refrigerator. Choose a Letter in each numbered category to build your model number. See below example.

Sample Three Door Model Number

Choose a Letter in each numbered category to build your model number.

BS84R-S-D2-LS-RK

1 2 3 4 4 4

No.	Category	Letter	Description
1	Base Model	BS36	36" 1-Door
		BS60	60" 2-Door
		BS84	84" 3-Door
		BS108	108" 4-Door
2	Compressor Location	L	Compressor on Left
		R	Compressor on Right
3	Top Finish	N	Unfinished
		S	Stainless Steel
4	Door Style & Finish	D1	18" Stainless Steel on top 15-1/2" Stainless Steel Drawer on bottom
		D2	15-1/2" Stainless Steel Drawer on top 18" Stainless Steel Drawer on bottom
		LS	Left Hinge / Stainless Steel
		RS	Right Hinge / Stainless Steel
		LK	Left Hinge / Glass with Stainless Steel
		RK	Right Hinge / Glass with Stainless Steel
		LB	Left Hinge / Black Vinyl
		RB	Right Hinge / Black Vinyl
		LG	Left Hinge / Glass with Black Vinyl
		RG	Right Hinge / Glass with Black Vinyl

