



# DIRECT STEAM KETTLE

## PEDESTAL MOUNTED STATIONARY MODEL GPT

Kettle shall be a Groen Model GPT (Specify 40, 60, 80, 100, 125 or 150-gallon) stainless steel, full steam jacketed unit operating from direct steam.

### AVAILABLE MODELS:

- ☐ GPT-40 (40 GALLON)
- ☐ GPT-60 (60 GALLON)
- ☐ GPT-80 (80 GALLON)
- ☐ GPT-100 (100 GALLON)
- ☐ GPT-125 (125 GALLON)
- ☐ GPT-150 (150 GALLON)

**CONSTRUCTION:** Kettle shall be of 18.8 type 304 stainless steel exterior with solid one-piece welded construction and 316 stainless steel interior. Unit shall be furnished with a heavy reinforced bar rim with a continuous seal weld on the underside to ensure maximum durability and sanitation. Unit provided with faucet bracket as standard.

**FINISH:** Kettle interior shall be polished to a 180 emery grit finish. Exterior of kettle shall be finished to a bright high buff finish, ensuring maximum ease in cleaning and maintaining brilliant appearance.

**ASME CODE:** Unit shall be ASME shop-inspected, stamped and registered with the National Board for operation up to a maximum working pressure of 25 PSI.

**SANITATION:** Unit shall be designed and constructed to be NSF-listed, meeting NSF and all known health department and sanitation codes.

**DRAWOFF:** Kettle shall have a 2" sanitary tangent drawoff which is a 316 stainless steel compression disc drain valve, for easy disassembly without tools. Larger 3" drawoffs available. The drain outlet shall be equipped with a removable 1/4" perforated stainless steel strainer.

**COVER:** Cover shall be one piece stainless steel dome shaped cover, hinged and counterbalanced, with No. 51 spring assisted cover actuator.

**STEAM PRESSURE:** Kettle shall operate dependably at any steam pressure between 5 and 25 PSI. Higher working pressures available.

**MOUNTING:** Kettle shall be mounted on a stainless steel pedestal base with outer circumference of the pedestal flange down vertically to ensure proper sealing to floor or deck.

**INSTALLATION:** Remote steam source required. Steam trap assembly is required and not provided unless ordered as an option. See dimension on other side for steam inlet size and number.

**ORIGIN OF MANUFACTURE:** Designed and manufactured in the United States.

PROJECT NAME:

LOCATION:

ITEM NO:

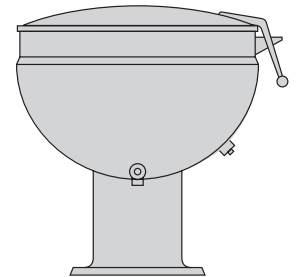
QTY:

MODEL NO:

AIA NO:

SIS NO:

Stainless steel Full Steam Jacketed Kettle, Pedestal Mounted, Stationary, Direct Steam. 40-150 gallon capacities. Model GPT shown.



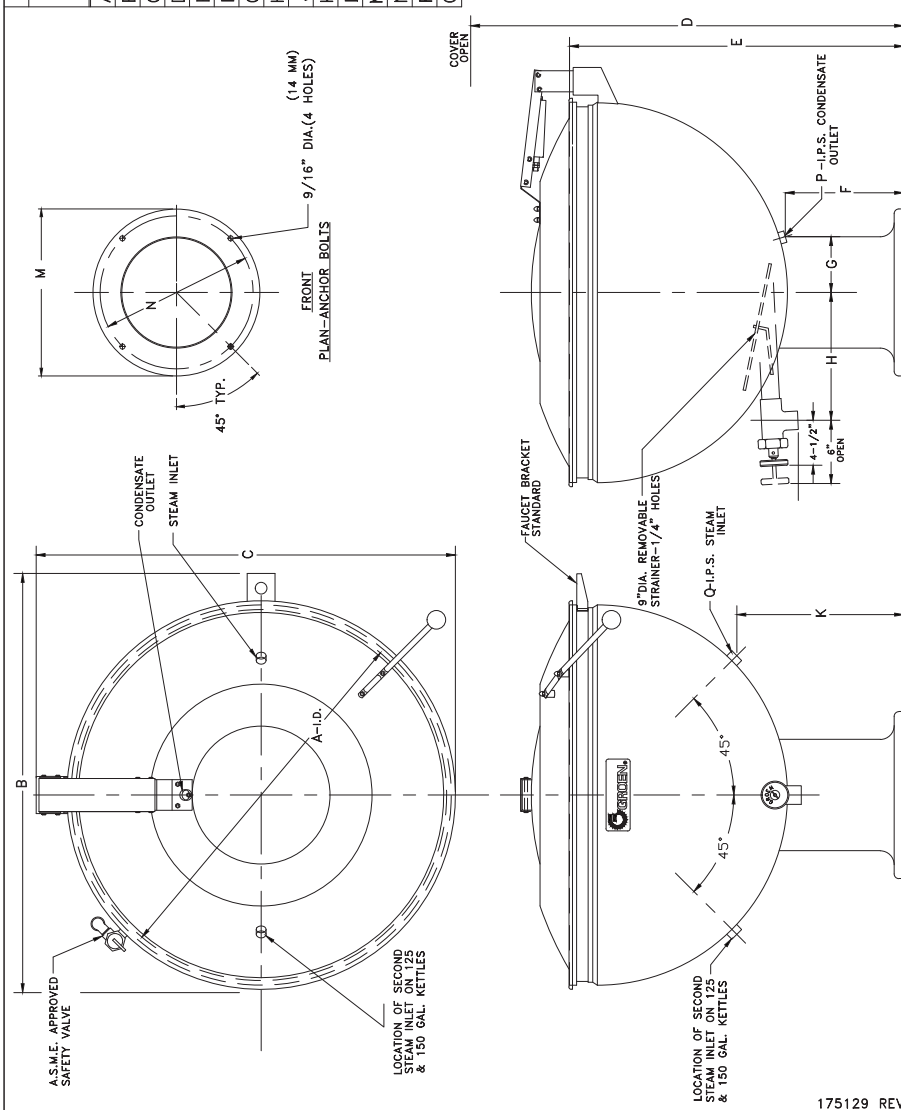
### OPTIONS/ACCESSORIES:

- ☐ Basket inserts
- ☐ Water fill faucets (single or double pantry)
- ☐ Higher working pressure
- ☐ 3" tangent drawoff valve
- ☐ 3" plug type drawoff valve
- ☐ Cold water cooling
- ☐ Steam trap assemblies
- ☐ Kettle brush kit



TABLE OF DIMENSIONS												
CAPACITY (GALLONS/LITRES)												
	40/152	60/228	80/304	100/380	125/475	150/570						
	IN	MM	IN	MM	IN	MM	IN	MM	IN	MM	IN	
A	32	813	36	915	40	1016	44	1118	48	1219	50	1270
B	36	915	40	1016	44	1118	48	1219	52	1321	54	1372
C	38 1/2	972 1/2	42 1/2	1080 1/2	46 1/2	1175 1/2	50 1/2	1277 1/2	54 1/2	1378 1/2	56 1/2	1429
D	65	1651	69	1753	73	1855	79	2007	84	2134	89	2261
E	36	915	34	915	36	915	39	991	41	1042	44	1118
F	17 1/2	445 1/4	14 1/2	368 1/4	14	356 1/4	14	356 1/4	14 1/2	368 1/2	16	406
G	8	203	8	203	8	203	8	203	11 1/2	292 1/2	11 1/2	292
H	14	356 1/2	15 1/2	394 1/2	15 1/2	394 1/2	18 1/2	470 1/2	19	483		
J	15 3/4	400 1/2	13 3/4	349 1/2	11 1/2	299 1/2	13 1/2	337 1/2	16 1/2	413 1/2	16 3/4	426
K	20 1/2	521 1/2	19 1/2	483 1/2	17 1/2	445 1/2	19 1/2	495 1/2	20 3/4	508 2/2	21 1/2	571
L	12 1/4	311 1/2	13 1/2	343 1/2	15	381 1/2	16 1/2	419 1/2	17 3/4	451 1/2	18 1/2	470
M	18	457	18	457	18	457	18	457	24	607	24	607
N	16 1/2	419 1/2	16 1/2	419 1/2	16 1/2	419 1/2	16 1/2	419 2/2	22 1/2	572 1/2	22 1/2	572
P	3/8	12	3/8	12	3/8	12	3/8	12	3/8	12	3/8	12
Q	1	25	1	25	1	25	1	25	1	25	1	25

NOTES:  
1. PEDESTAL BASE MUST BE SECURELY ANCHORED TO FLOOR. (SEE ANCHOR BOLT PLAN)



MATERIAL		UNITED BRANDS	
STEEL	304	PLANOGRAPH "GPT" KETTLE	175129
DATE	9/7/18	REV. A	1
DESIGNED BY	W. J. K.	DATE	9/7/18
CHECKED BY	W. J. K.	DATE	9/7/18
APPROVED BY	W. J. K.	DATE	9/7/18

REV.	DATE	DESCRIPTION
1	9/7/18	RELEASE FOR PRODUCTION

P/N 175131 REV A