



BEVERAGE-AIR

Project: _____	AIA# _____
Item: _____	
Location: _____	SIS# _____
Approved: _____	

MT MARKETEER™ MERCHANDISERS

MT53 White Sliding Door Model
Hydrocarbon Series

MODELS:
MT53-1SDW



MT53-1SDW

OPTIONS & ACCESSORIES

- ☐ Extra shelves & clips
- ☐ 3" Casters
- ☐ Visislide shelving kit
- ☐ Door lock (field installed only)

3 Year Parts/Labor Warranty
Additional 2 Year Compressor Warranty

CABINET CONSTRUCTION

- Standard cabinet exterior finish is heavy duty steel with a white baked on durable coating
- Heavy duty interior construction includes white coated steel
- Electronic temperature control
- Modern one piece grill
- Double pane lowE argon filled glass doors feature outside pane that is tempered for added safety
- Self-closing sliding glass door, black door frames regardless of exterior color
- Pocket door handle
- LED lighting
- Five (5) epoxy coated shelves per section
- 2" Leveling feet

REFRIGERATION SYSTEM

- Refrigeration system uses R290 refrigerant to comply with all environmental standards
- Condenser is designed to be low maintenance, and energy efficient.
- Automatic, non-electric defrost
- Epoxy coated evaporator coil

MT53™ Merchandiser: Sliding Door Model



3779 Champion Blvd., Winston-Salem, NC 27105
1-888-845-9800 Fax: 1-336-245-6453
Beverage-Air.com sales@bevair.com



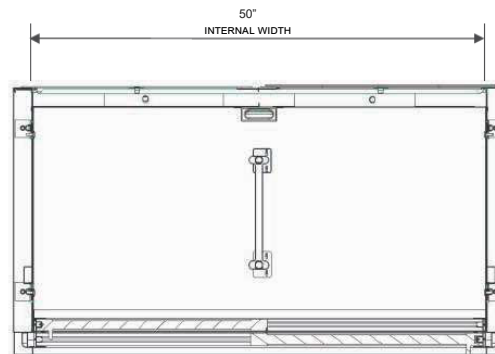
BEVERAGE-AIR

MODEL	MT53-1SDW
EXTERNAL DIMENSIONAL DATA	
Width Overall	54 1/4"
Depth Overall	29 3/8"
Height Overall	78 5/8"
Number of Doors	2
Shelf Area (Sq. in)	474"
INTERNAL DIMENSIONAL DATA	
NET Capacity (cubic ft.)	41.66
Capacity 20 oz	480
Internal Width Overall (in)	50"
Internal Depth Overall (in)	23 1/4"
Internal Height Overall (in)	59 11/16"
Internal Height Useable (in)	54"
Number of Shelves	10
ELECTRICAL DATA	
Full Load Amperes 115/60/1	8.7
REFRIGERATION DATA	
Horsepower	1/2
Capacity (BTU/Hr)*	4201
WEIGHT DATA	
Gross Weight (Crated lbs)	483.91 lbs
Height - Crated	85 3/8"
Width - Crated	57"
Depth - Crated	33"

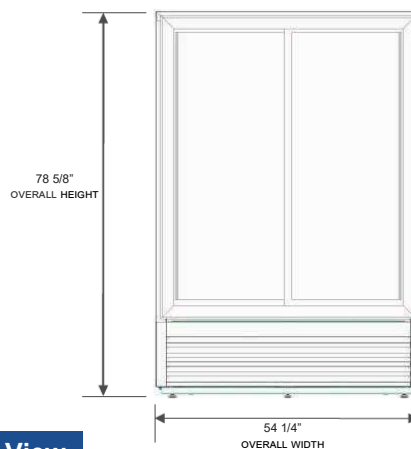
Glass Sliding Door Model

Models: MT53-1SDW

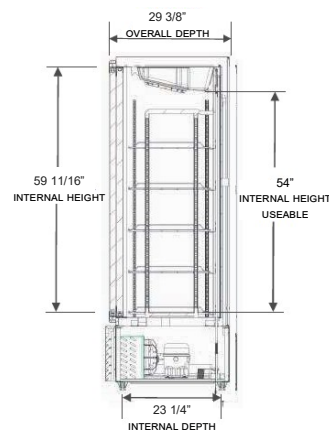
Model Views



Plan View



Elevation View



Side View

ELECTRICAL CONNECTION



115/60/1
NEMA-5-15P

Units pre-wired at
factory and include 8'
long cord and plug set.



an Ali Group Company



The Spirit of Excellence

3779 Champion Blvd., Winston-Salem, NC 27105
1-888-845-9800 Fax: 1-336-245-6453
Beverage-Air.com sales@bevair.com