

# Fusion

## Product Specifications

ITEM NO: \_\_\_\_\_  
PROJECT: \_\_\_\_\_  
DATE: \_\_\_\_\_

### Refrigerated Self-Service Case

□ GMSSV452R

Lengths include 1-1/8" end panels  
51"L x 43"D x 51-5/8"H



MODEL SHOWN: GMSSV452R

#### STANDARD FEATURES

- Breeze™ w/EnergyWise s/c refrigeration
- Compressor air intake from rear and out front panel at toe kick. Front panel cannot be blocked.
- Condensate pan (self-contained refrig. only)
- Flat upper front panel
- Integrated average product temperature of 40°F or less
- LED 4000K top light(s)
- Metal shelves (3), lighted (LED 4000K)
- One year parts & labor; 5 year compressor warranty

Features	Standard	Options
EXTERIOR COLOR	□ Laminated (non-premium) Confirm pattern/grain direction	□ Laminated (premium) Confirm pattern/grain direction □ Stainless steel
INTERIOR COLOR	□ Black	□ Stainless steel □ White
LOWER FRONT PANEL COLOR	□ Painted - Black	□ Stainless steel
REAR EXTERIOR	□ Stainless steel	□ Painted - Black □ Painted - White
TRIM COLOR	□ Black	□ Silver
BASE	□ Casters w/ levelers (n/a w/ remote ref.)	□ 6"H legs (n/a w/ remote ref.) □ Rail system for shims
END PANEL LEFT	□ Full end panel w/stainless mirrored interior	□ Cutaway w/ glass □ No end panel w/ synchronized defrost
END PANEL RIGHT	□ Full end panel w/stainless mirrored interior	□ Cutaway w/ glass □ No end panel w/ synchronized defrost
UPPER REAR	□ Solid back panel, black	□ Solid rear swinging doors
ELECTRICAL CONNECT	□ 6' straight blade power cord (self-cont.)	□ 6' locking power cord (self-cont.) □ Electrical leads (remote)
REFRIGERATION	□ Breeze™ w/EnergyWise s/c refrigeration	□ NOTE: Remote only available w/rail base w/shims. N/A w/ levelers, casters or legs. □ Note: Remote doesn't incl Conds unit. Floor drain reqd. □ Remote w/thermostat, solenoid & TXV
MISCELLANEOUS		□ Rear door lock □ Second year parts & labor warranty (excludes compressor)
ACCESSORIES		□ Clean Sweep® coil cleaner (n/a w/remote) □ Price tag molding (matches interior color) □ Removable wire security cover, locking

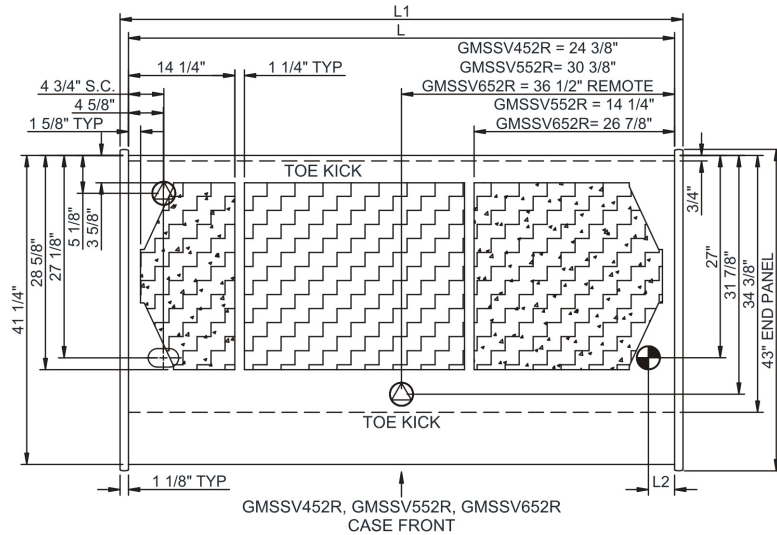
# Fusion

## Product Specifications

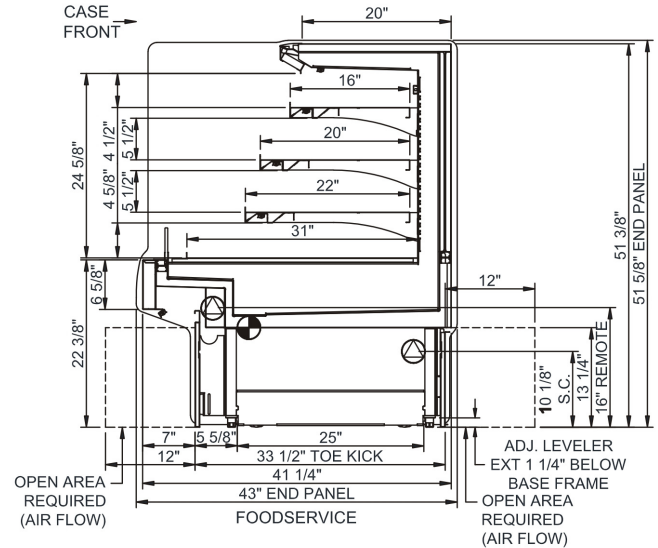
**Intended Environment:** Type I - Designed to operate in ambient conditions of 75°F with 55% relative humidity unless noted otherwise in system information below.

Zone	Intended Product To Be Displayed	Warmest Avg Prod Temp ° F
1	Packaged refrigerated products	40

PLAN VIEW



SIDE VIEW



**NOTE: ALL DIMENSIONS APPROXIMATE**

- ELECTRICAL JUNCTION BOX (SUPPLIED WITH 6" LEADS OR POWER CORD).
- LOCATION OF DRAIN TUBE FOR REMOTE REF. ONLY (SUPPLIED WITH 3/4" OR 1 1/2" PVC TUBE).

- REFRIGERATION LINE CONNECTION.
- REMOTE FLOOR SINK & UTILITIES ACCESS AREA.

- SELF-CONTAINED CASE SERVICE ACCESS AREA.
- DRY CASE SERVICE ACCESS AREA.

Model Technical Specifications														
Model	L"	L1"	L2"	System Circuit Volts			Phs	Freq	Amps ***	Watts	Wires	NEMA Plug	SST	Conv. Rack BTUH
GMSSV452R	48.75	51.00	3.50	Remote(Type I)	Circuit #1	110-120	1	60	1.18	86	2+G	Leads Multiple	20.00	3201
				Self-Contained	Circuit #1	110-120	1	60	14.80	1,321	2+G	5-20P or L5-20P	N/A	2964

\*\*\* Does not include electric defrost on freezer models.

### Important Notes:

- 1) ELECTRICAL NOTE: If GFCI is required, a GFCI breaker MUST be used in lieu of a GFCI receptacle
- 2) 45" minimum door entry clearance required (without shipping skid).
- 3) Units are supplied with levelers. They must be adjusted during installation to ensure the unit is level and plumb. Dimensions reflect levelers extended 1 1/4".

**WARNING:** This product can expose you to chemicals, including Urethane (Ethyl Carbamate), which are known to the State of California to cause cancer and birth defects or other reproductive harm. For more information go to [www.P65Warnings.ca.gov](http://www.P65Warnings.ca.gov).

Regulatory Approvals:	
All Models	<p>Accordance with AHRI Std 1200</p> <p>ETL Listed to UL 471</p> <p>ETL Listed to CAN/CSA 22.2 No. 120</p> <p>ETL Sanitation to NSF 7</p>



In Accordance with  
**AHRI Std 1200**

**DOE 2017**  
Energy Efficiency  
Compliant