

Non-Refrigerated Service/Self-Service Countertop Case - Vertical Front



MODEL SHOWN:
CGSV4522 SERVICE
W/ STAINLESS OPTION



MODEL SHOWN:
CGSV4522 SELF-SERVICE
W/ STAINLESS OPTION

- ☐ CGSV3422
- ☐ CGSV4522
- ☐ CGSV5722
- ☐ CGSV6922

| Lengths include end panels | |
|----------------------------|--|
| 34"L x 18"D x 22"H | |
| 45"L x 18"D x 22"H | |
| 57"L x 18"D x 22"H | |
| 69"L x 18"D x 22"H | |

STANDARD FEATURES

- Clear glass swinging doors w/o lock
- Designed for service or self-service applications
- Glass end
- LED top light
- One year parts & labor warranty
- Shelving removable and adjustable on 1" centers. Can be angled at 10°, 0° or -10° allowing for service or self-service applications

| Features | Standard | Options |
|---------------------------|------------------------------------------------------------------------------------------------------------|-----------------------------------------------------------------------|
| INTERIOR / EXTERIOR COLOR | <input type="checkbox"/> Black | <input type="checkbox"/> Stainless steel |
| SHELVING | <input type="checkbox"/> (1) Upper clear glass shelf, lighted (LED 3500K) and (1) lower shelf, non-lighted | <input type="checkbox"/> (2) Clear glass shelves, lighted (LED 3500K) |
| ELECTRICAL CONNECT | <input type="checkbox"/> 12" straight blade power cord | <input type="checkbox"/> Electrical leads (non-refrigerated) |
| MISCELLANEOUS | | <input type="checkbox"/> Second year parts & labor warranty |

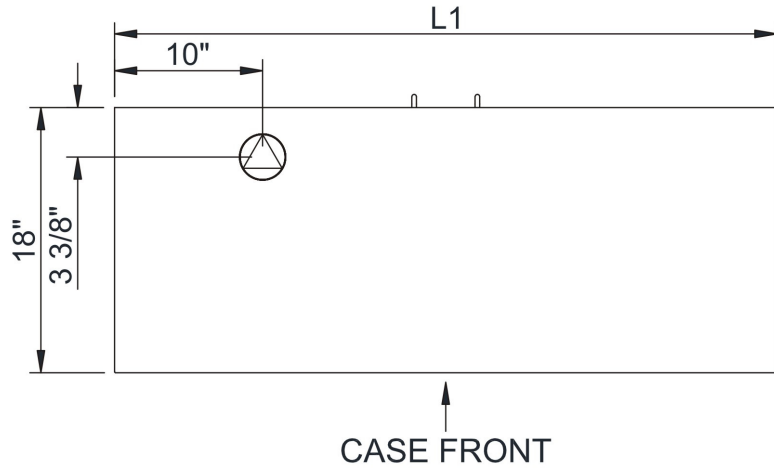
Impulse

Product Specifications

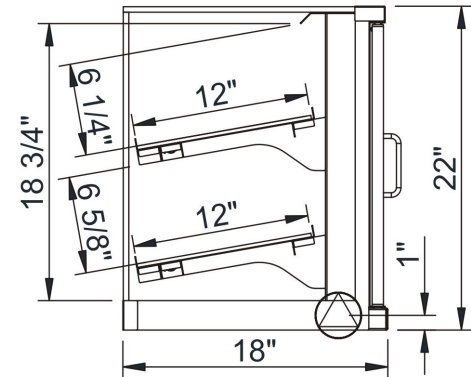
| | | |
|------------------------------------------------------------------------------------------------------------------------------------------------------------------------|-----------------------------------------|----------------------------------|
| Intended Environment: Type I - Designed to operate in ambient conditions of 75°F with 55% relative humidity unless noted otherwise in system information below. | | |
| Zone | Intended Product To Be Displayed | Warmest Avg Prod Temp ° F |
| 1 | Packaged non-refrigerated products | Ambient |

PLAN VIEW

SIDE VIEW



CASE FRONT



NOTE: ALL DIMENSIONS APPROXIMATE

- ELECTRICAL JUNCTION BOX (SUPPLIED WITH 6" LEADS OR POWER CORD).
- LOCATION OF DRAIN TUBE FOR REMOTE REF. ONLY (SUPPLIED WITH 3/4" OR 1 1/2" PVC TUBE).

- REFRIGERATION LINE CONNECTION.
- REMOTE FLOOR SINK & UTILITIES ACCESS AREA.

- SELF-CONTAINED CASE SERVICE ACCESS AREA.
- DRY CASE SERVICE ACCESS AREA.

| Model Technical Specifications | | | | | | | | | | | | | | | | |
|--------------------------------|-----|-------|-----|----------------------|------------|---------|-----|------|----------|-------|-------|-----------|-----|-----------------|-----------------|--------|
| Model | L" | L1" | L2" | System Circuit Volts | | | Phs | Freq | Amps *** | Watts | Wires | NEMA Plug | SST | Conv. Rack BTUH | Para. Rack BTUH | Est Wt |
| CGSV3422 | N/A | 34.00 | .00 | Ambient | Circuit #1 | 110-120 | 1 | 60 | 0.70 | 11 | 2+G | 5-15P | N/A | N/A | N/A | 350 |
| CGSV4522 | N/A | 45.00 | .00 | Ambient | Circuit #1 | 110-120 | 1 | 60 | 0.70 | 17 | 2+G | 5-15P | N/A | N/A | N/A | 375 |
| CGSV5722 | N/A | 57.00 | .00 | Ambient | Circuit #1 | 110-120 | 1 | 60 | 0.70 | 21 | 2+G | 5-15P | N/A | N/A | N/A | 400 |
| CGSV6922 | N/A | 69.00 | .00 | Ambient | Circuit #1 | 110-120 | 1 | 60 | 0.70 | 26 | 2+G | 5-15P | N/A | N/A | N/A | 425 |

*** Does not include electric defrost on freezer models.

Important Notes:

1) Electrical Note: If GFCI is required, a GFCI breaker Must be used in lieu of a GFCI receptacle.

WARNING: This product can expose you to chemicals, including Urethane (Ethyl Carbamate), which are known to the State of California to cause cancer and birth defects or other reproductive harm. For more information go to www.P65Warnings.ca.gov.

Regulatory Approvals:

All Models ETL Listed to UL 65
ETL Sanitation to NSF 2



DOE 2017
Energy Efficiency
Compliant