

Fusion

Product Specifications

ITEM NO: _____
PROJECT: _____
DATE: _____

Inline Refrigerated Self-Service Case



MODEL SHOWN: FB4SS-3R

- ☐ FB3SS-2R
- ☐ FB4SS-3R
- ☐ FB6SS-4R

Lengths include end panels
40"L x 43"D x 55-1/2"H
53"L x 43"D x 55-1/2"H
66"L x 43"D x 55-1/2"H

STANDARD FEATURES

- Remote w/thermostat, solenoid & TXV
- 15-5/8" Toe kick
- Blue Fin coated coil
- Clear sneeze guard glass w/ stainless steel posts
- Condiment pan support rails
- Electrical leads
- Integrated average product temperature of 40°F or less
- LED 4000K top light(s)
- NOTE: Pans not supplied with case.
- NOTE: Remote only available w/rail base w/shims. N/A w/ levelers, casters or legs.
- One year parts & labor warranty
- Rail system for shims
- Stainless steel interior

Features	Standard	Options
EXTERIOR COLOR	<input type="checkbox"/> Laminated (non-premium) Confirm pattern/grain direction	<input type="checkbox"/> Laminated (premium) Confirm pattern/grain direction <input type="checkbox"/> Stainless steel
COUNTER	<input type="checkbox"/> Stainless steel	<input type="checkbox"/> 3 cm. Quartz
REAR STORAGE	<input type="checkbox"/> Non-refrigerated rear storage (w/o doors)	<input type="checkbox"/> Non-refrigerated rear storage w/ sliding doors <input type="checkbox"/> Refrigerated rear storage w/ sliding doors
TOE KICK	<input type="checkbox"/> Painted - Black	<input type="checkbox"/> Stainless steel
REFRIGERATION	<input type="checkbox"/> Remote w/thermostat, solenoid & TXV	<input type="checkbox"/> Note: Remote doesn't incl Conds unit. Floor drain reqd.
MISCELLANEOUS		<input type="checkbox"/> Second year parts & labor warranty

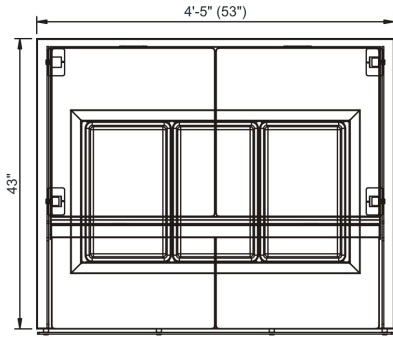
Product Specifications

Zone	Intended Product To Be Displayed
1	1
2	2
3	3
4	4
5	5
6	6
7	7
8	8
9	9
10	10
11	11
12	12
13	13
14	14
15	15
16	16
17	17
18	18
19	19
20	20
21	21
22	22
23	23
24	24
25	25
26	26
27	27
28	28
29	29
30	30
31	31
32	32
33	33
34	34
35	35
36	36
37	37
38	38
39	39
40	40
41	41
42	42
43	43
44	44
45	45
46	46
47	47
48	48
49	49
50	50
51	51
52	52
53	53
54	54
55	55
56	56
57	57
58	58
59	59
60	60
61	61
62	62
63	63
64	64
65	65
66	66
67	67
68	68
69	69
70	70
71	71
72	72
73	73
74	74
75	75
76	76
77	77
78	78
79	79
80	80
81	81
82	82
83	83
84	84
85	85
86	86
87	87
88	88
89	89
90	90
91	91
92	92
93	93
94	94
95	95
96	96
97	97
98	98
99	99
100	100

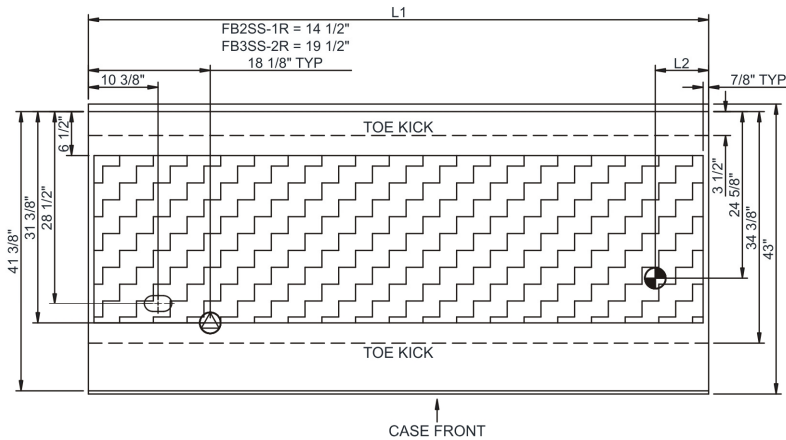
Warmest Avg Prod Temp ° F

40

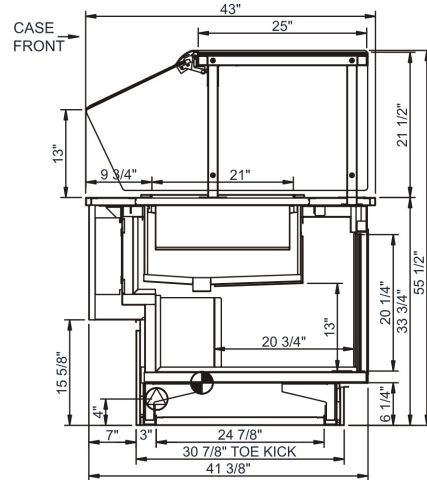
PLAN VIEW



MODEL FB4SS-3R SHOWN



SIDE VIEW



 **ELECTRICAL JUNCTION BOX**
(SUPPLIED WITH 6" LEADS OR POWER CORD).

 **LOCATION OF DRAIN TUBE FOR REMOTE REF. ONLY (SUPPLIED WITH $\frac{3}{4}$ " OR $1\frac{1}{2}$ " PVC TUBE).**

 **REFRIGERATION LINE CONNECTION.** **REMOTE FLOOR SINK & UTILITIES ACCESS AREA.** SELF-CONTAINED CASE SERVICE ACCESS AREA.

 **DRY CASE SERVICE ACCESS AREA.**

Model Technical Specifications

Model	L"	L1"	L2"	System Circuit Volts			Phs	Freq	Amps ***	Watts	Wires	NEMA Plug	SST	Conv. Rack BTUH	Para. Rack BTUH	Est Wt
FB3SS-2R	N/A	40.00	7.88	Remote(Type I)	Circuit #1	110-120	1	60	1.06	60	2+G	Leads Multiple	20.00	1123	1040	600
FB4SS-3R	N/A	53.00	7.88	Remote(Type I)	Circuit #1	110-120	1	60	1.17	80	2+G	Leads Multiple	20.00	1296	1200	750
FB6SS-4R	N/A	66.00	7.88	Remote(Type I)	Circuit #1	110-120	1	60	1.27	96	2+G	Leads Multiple	20.00	1469	1360	1,100

*** Does not include electric defrost on freezer models.

Regulatory Approvals:

All Models	<p>Accordance with AHRI Std 1200</p> <p>ETL Listed to UL 471</p> <p>ETL Listed to CAN/CSA 22.2 No. 1200</p> <p>ETL Sanitation to NSF 7</p>
------------	--



In Accordance with
AHRI Std 1200

DOE 2017
Energy Efficiency
Compliant

Important Notes:

⚠ WARNING: This product can expose you to chemicals, including Urethane (Ethyl Carbamate), which are known to the State of California to cause cancer and birth defects or other reproductive harm. For more information go to www.P65Warnings.ca.gov.