



# DIRECT STEAM KETTLE

## FLOOR MOUNTED STATIONARY MODEL GT

Kettle shall be a Groen Model GT (Specify 40, 60, 80, 100, 125 or 150-gallon) stainless steel, full steam jacketed unit operating from direct steam.

### AVAILABLE MODELS:

- ☐ GT-40 (40 GALLON)
- ☐ GT-60 (60 GALLON)
- ☐ GT-80 (80 GALLON)
- ☐ GT-100 (100 GALLON)
- ☐ GT-125 (125 GALLON)
- ☐ GT-150 (150 GALLON)

**CONSTRUCTION:** Kettle shall be of 18.8 type 304 stainless steel exterior with solid one-piece welded construction and 316 stainless steel interior. Unit shall be furnished with a heavy reinforced bar rim with a continuous seal weld on the underside to ensure maximum durability and sanitation. Unit provided with faucet bracket as standard.

**FINISH:** Kettle interior shall be polished to a 180 emery grit finish. Exterior of kettle shall be finished to a bright high buff finish, ensuring maximum ease in cleaning and maintaining brilliant appearance.

**ASME CODE:** Unit shall be ASME shop-inspected, stamped and registered with the National Board for operation up to a maximum working pressure of 25 PSI.

**SANITATION:** Unit shall be designed and constructed to be NSF-listed, meeting NSF and all known health department and sanitation codes.

**DRAWOFF:** Kettle shall have a 2" sanitary tangent drawoff which is a 316 stainless steel compression disc drain valve, for easy disassembly without tools. Larger 3" drawoffs available. The drain outlet shall be equipped with a removable 1/4" perforated stainless steel strainer.

**COVER:** Cover shall be one piece stainless steel dome shaped cover, hinged and counterbalanced, with No. 51 spring assisted cover actuator.

**STEAM PRESSURE:** Kettle shall operate dependably at any steam pressure between 5 and 25 PSI. Higher working pressures available.

**MOUNTING:** Kettle shall be mounted on stainless steel, tubular legs, continuously welded to kettle, with stainless steel adjustable floor flanges.

**INSTALLATION:** Remote steam source required. Steam trap assembly is required and not provided unless ordered as an option. See dimension on other side for steam inlet size and number.

**ORIGIN OF MANUFACTURE:** Designed and manufactured in the United States.

PROJECT NAME:

LOCATION:

ITEM NO:

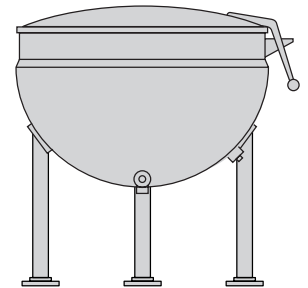
QTY:

MODEL NO:

AIA NO:

SIS NO:

Stainless steel Full Steam Jacketed Kettle, Floor Mounted, Stationary, Direct Steam. 40-150 gallon capacities. Model GT shown.



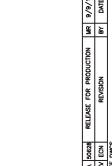
### OPTIONS/ACCESSORIES:

- ☐ Basket inserts
- ☐ Water fill faucets (single or double pantry)
- ☐ Higher working pressure
- ☐ 3" tangent drawoff valve
- ☐ 3" plug type drawoff valve
- ☐ Cold water cooling
- ☐ Steam trap assemblies
- ☐ Kettle brush kit



**NOTES:**

1. LEGS MUST BE SECURELY ANCHORED TO FLOOR.
2. MODEL 51 COUNTERBALANCED COVER (ILLUSTRATED) IS STANDARD ON 40 TO 150 GALLON SIZES.



© 2016 Unified Brands. All Rights Reserved. Unified Brands is a wholly-owned subsidiary of Dover Corporation.



# DIRECT STEAM KETTLE

## PEDESTAL MOUNTED STATIONARY MODEL GPT

Kettle shall be a Groen Model GPT (Specify 40, 60, 80, 100, 125 or 150-gallon) stainless steel, full steam jacketed unit operating from direct steam.

### AVAILABLE MODELS:

- ☐ GPT-40 (40 GALLON)
- ☐ GPT-60 (60 GALLON)
- ☐ GPT-80 (80 GALLON)
- ☐ GPT-100 (100 GALLON)
- ☐ GPT-125 (125 GALLON)
- ☐ GPT-150 (150 GALLON)

**CONSTRUCTION:** Kettle shall be of 18.8 type 304 stainless steel exterior with solid one-piece welded construction and 316 stainless steel interior. Unit shall be furnished with a heavy reinforced bar rim with a continuous seal weld on the underside to ensure maximum durability and sanitation. Unit provided with faucet bracket as standard.

**FINISH:** Kettle interior shall be polished to a 180 emery grit finish. Exterior of kettle shall be finished to a bright high buff finish, ensuring maximum ease in cleaning and maintaining brilliant appearance.

**ASME CODE:** Unit shall be ASME shop-inspected, stamped and registered with the National Board for operation up to a maximum working pressure of 25 PSI.

**SANITATION:** Unit shall be designed and constructed to be NSF-listed, meeting NSF and all known health department and sanitation codes.

**DRAWOFF:** Kettle shall have a 2" sanitary tangent drawoff which is a 316 stainless steel compression disc drain valve, for easy disassembly without tools. Larger 3" drawoffs available. The drain outlet shall be equipped with a removable 1/4" perforated stainless steel strainer.

**COVER:** Cover shall be one piece stainless steel dome shaped cover, hinged and counterbalanced, with No. 51 spring assisted cover actuator.

**STEAM PRESSURE:** Kettle shall operate dependably at any steam pressure between 5 and 25 PSI. Higher working pressures available.

**MOUNTING:** Kettle shall be mounted on a stainless steel pedestal base with outer circumference of the pedestal flange down vertically to ensure proper sealing to floor or deck.

**INSTALLATION:** Remote steam source required. Steam trap assembly is required and not provided unless ordered as an option. See dimension on other side for steam inlet size and number.

**ORIGIN OF MANUFACTURE:** Designed and manufactured in the United States.

PROJECT NAME:

LOCATION:

ITEM NO:

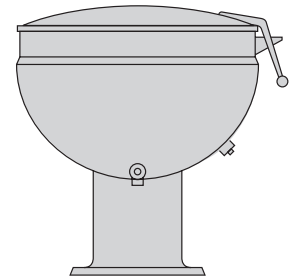
QTY:

MODEL NO:

AIA NO:

SIS NO:

Stainless steel Full Steam Jacketed Kettle, Pedestal Mounted, Stationary, Direct Steam. 40-150 gallon capacities. Model GPT shown.



### OPTIONS/ACCESSORIES:

- ☐ Basket inserts
- ☐ Water fill faucets (single or double pantry)
- ☐ Higher working pressure
- ☐ 3" tangent drawoff valve
- ☐ 3" plug type drawoff valve
- ☐ Cold water cooling
- ☐ Steam trap assemblies
- ☐ Kettle brush kit



Technical drawing of a 150-gal. kettle, showing front and plan views.

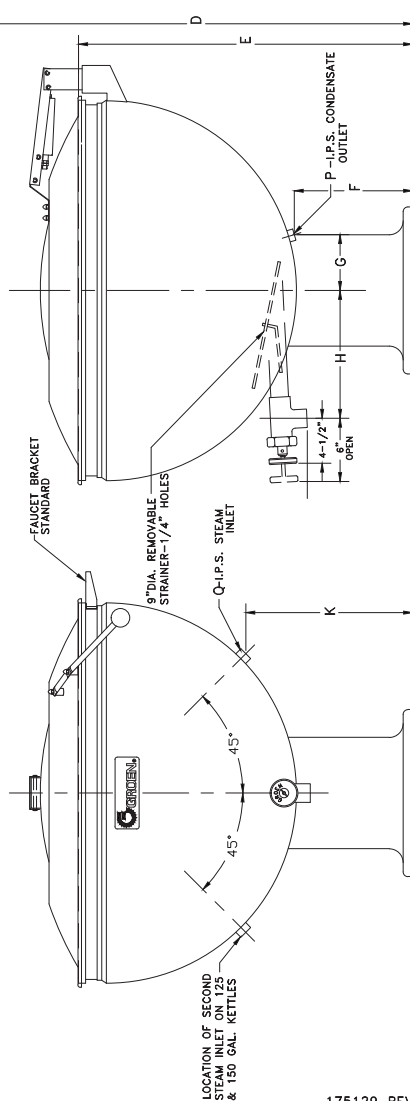
**FRONT VIEW:**

- Overall height:  $B$
- Overall diameter:  $C$
- Internal diameter:  $A-I.D.$
- Components: CONDENSATE OUTLET, STEAM INLET, A.S.M.E. APPROVED SAFETY VALVE.

**PLAN VIEW:**

- Overall diameter:  $M$
- Center-to-center distance:  $N$
- Anchor bolts: 4 bolts, 9/16" DIA. (4 HOLES), 45° TYP.
- Note: LOCATION OF SECOND STEAM INLET AT TOP OF KETTLES

**NOTES:**



175129 REV. A

A	RELEASE FOR PRODUCTION		R/T/T/E	
	REVISION	BY	DATE	

P/N 175131 REV A