

# 300-HWIS Series

## Hot Food Holding Drop-In Well



• The gentle heating capability of Halo Heat significantly extends hot food holding life without continuing the cooking process.

- Provides a more appealing product with better appearance and fresher taste.
- Front-of-the-house use with an existing counter, overhead heating, and sneeze guard system or drop into a prep table for hot food plating convenience.
- Easy drop-in installation without the need of water or drainage connections and the related installation and water usage costs.
- Maintenance savings with the elimination of lime and scale buildup associated with steam table holding.
- Increase employee safety with the elimination of burning steam when changing pans.
- Adjustable thermostat with remote control suitable for mounting provides holding temperature flexibility without high steam table temperatures to scorch or burn.
- Stainless steel interior walls are easy to clean with coved corners on two sides of the well.



ANSI/NSF 4



CE EAC IP X3

### Short Form Spec

The Alto-Shaam 300-HWIS is a hot food holding well with a stainless steel exterior. The hot well includes stainless steel interior walls with coved corners on two sides. The well is controlled by three (3) adjustable thermostats, one (1) for each well, with a range of 1 through 10, each with an indicator light. The thermostat control is attached to the hot well base by a 72" (1829mm) flexible and water tight conduit.

The 6-3/8" (162mm) hot well holds 6" (150mm) deep pans and a combination of standard (gastronorm) pan sizes. Six (6) half/third-size pan divider bars are included.

☐ **Model 300-HWIS/D6:** 6-3/8" (162mm) depth, accepts three (3) full-size (gastronorm) pans

### Factory-Installed Options

#### • Voltage Choices:

- ☐ 120V
- ☐ 208-240V
- ☐ 230V

#### • Control Box Cord Location:

- ☐ Back, Standard
- ☐ Bottom, Option

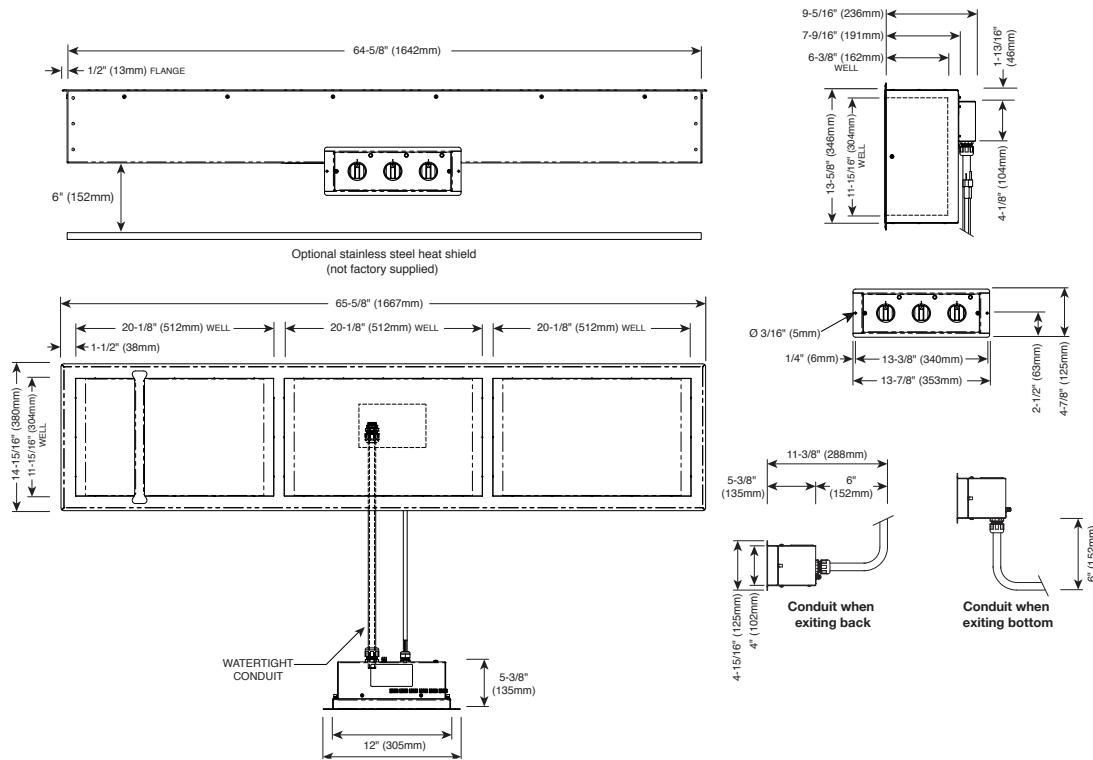


W164 N9221 Water Street • P.O. Box 450 • Menomonee Falls, Wisconsin 53052-0450 • U.S.A.  
 Phone: 262.251.3800 800.558.8744 U.S.A./CANADA Fax: 262.251.7067 800.329.8744 U.S.A. only  
[www.alto-shaam.com](http://www.alto-shaam.com)



# 300-HWIS Series

## Hot Food Holding Drop-In Well



Product\Pan Capacity*	
108 lb (49 kg)	
Max. volume: 66 qt (63 L)	
Full-Size Pans:	Three (3) 12" x 20" x 6" GN 1/1 (325mm x 530mm x 150mm)
Half-Size Pans:	Six (6) 12" x 10" x 6" GN 1/2 (325mm x 265mm x 150mm)
Third-Size Pans:	Nine (9) 12" x 6" x 6" GN 1/3 (325mm x 150mm x 150mm)

\*Based on 6" (150mm) deep pans. Will also accept 2-1/2" (65mm) and 4" (100mm) deep pans

### Installation Requirements

- Hot well must be installed level and must not be installed in any area where it may be directly affected by steam, grease, dripping water, high temperatures, or any other severely adverse conditions.
- Some foods may require additional overhead heating. Always monitor the food temperature and add overhead heating when needed.
- Countertop material must withstand temperatures up to 200°F (93°C).
- A stainless steel heat shield is recommended if the area under the hot well is used for storage.

### Clearance Requirements

1" (25mm) from combustible surfaces

### Weight

**Net:** 77.5 lb (35 kg) **Ship\*:** 160 lbs (73 kg)

**Carton Dimensions\*:** (L x W x H)

72" x 35" x 18" (1829mm x 889mm x 457mm)

\*Domestic ground shipping information. Contact factory for export weight and dimensions.

### Dimensions: H x W x D

**Overall Exterior:** 9-5/16 x 65-5/8" x 14-15/16"  
(236mm x 1667mm x 380mm)

**Well Interior:** 6-3/8" x 11-15/16" x 20-1/8"  
(162mm x 304mm x 512mm)

**Counter Cutout:** 65-1/4" x 14-1/4"  
(1657mm x 362mm)

**Control Cutout:** 4-1/4" x 12-1/4" x 11-3/8"  
(108mm x 311mm x 288mm)

Allow 6" (152mm) clearance from control box to conduit bend

### Electrical

V	Ph	Hz	A	kW		
120	1	50/60	15.0	1.8		NEMA 5-20P 20A-125V plug
208	1	50/60	6.5	1.4		NEMA 6-15P, 15A - 250V plug
240	1	50/60	7.5	1.8		
230	1	50/60	7.8	1.8		Plugs Rated 250V
		CEE 7/7		CH2-16P		BS 1363

Cord Length: 120V - 6 ft. (1.8m) 208-240V - 9 ft. (2.7m)  
230V (CEE) - 9 ft. (2.7m) 230V (CH, BS) - 8 ft. (2.5m)

### Accessories

- ☐ Pan Divider Bar — half-size/third-size ..... 11318
- ☐ Locking Kit ..... 5020849



W164 N9221 Water Street • P.O. Box 450 • Menomonee Falls, Wisconsin 53052-0450 • U.S.A.  
Phone: 262.251.3800 800.558.8744 U.S.A./Canada Fax: 262.251.7067 800.329.8744 U.S.A. only  
[www.alto-shaam.com](http://www.alto-shaam.com)