



Model: _____ Item #: _____ Date: _____
Project: _____ Qty: _____ Approved By: _____

Drop-In Sinks with 1-1/2" Drains

DROP-IN SINKS

Standard Features (applies to all models)

- Fabrication: 20 gauge stainless steel. All seams tig welded and polished.
- Bowl: High quality deep drawn
- Faucet & drain included
- Drain: Stainless steel 1-1/2" drain

Optional Accesories

Model	Description
H-100	Chrome plated 1-1/2" IPS P-Trap
H-103	Wrist Handle Kit
H-109	Upgrade: Royal Series Faucet
H-200	Upgrade: Silver Series Faucet

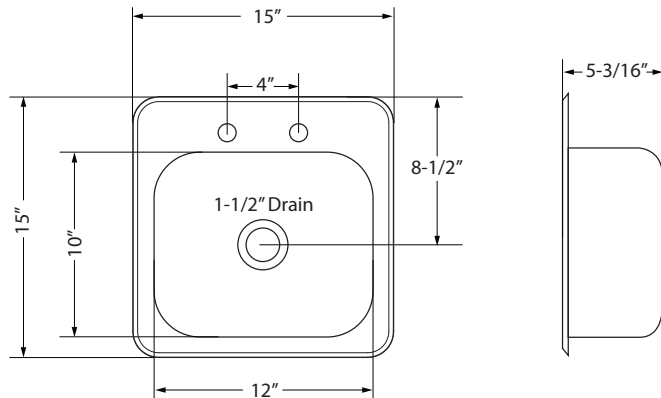
HS-1515

15" Drop-In Sink



Features

- Overall size:
15"W x 15"L x 5-3/16"D
- Bowl size:
12"W x 10"L x 5-3/16"D
- Faucet & drain included
- Weight: 6 lbs.



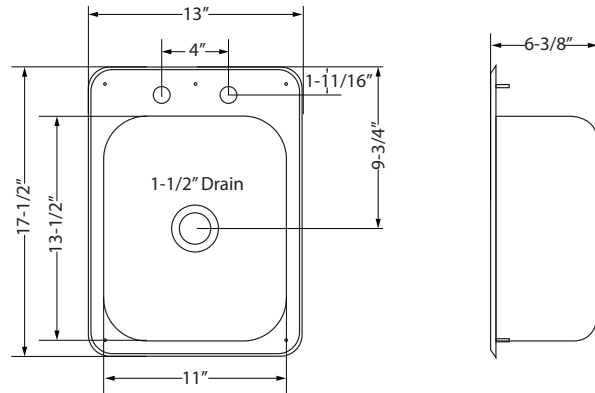
HS-1317

13" Drop-In Sink



Features

- Overall size:
13"W x 17-1/2"L x 6-3/8"D
- Bowl size:
11"W x 13-1/2"L x 6-3/8"D
- Faucet & drain included
- Weight: 6 lbs.



HS-2017

20-1/4" Drop-In Sink



Features

- Overall size:
20-1/4"W x 17-7/8"L x 7-1/2"D
- Bowl size:
17-7/8"W x 12-3/4"L x 7-1/2"D
- Faucet & drain included
- Weight: 8 lbs.

