



Model: \_\_\_\_\_ Item #: \_\_\_\_\_ Date: \_\_\_\_\_  
Project: \_\_\_\_\_ Qty: \_\_\_\_\_ Approved By: \_\_\_\_\_

## Self-Contained Sliding Door Pass Thru Back Bar Cooler

## REFRIGERATION



AVAILABLE WITH LEFT OR RIGHT SIDE COMPRESSOR

### Optional Accessories

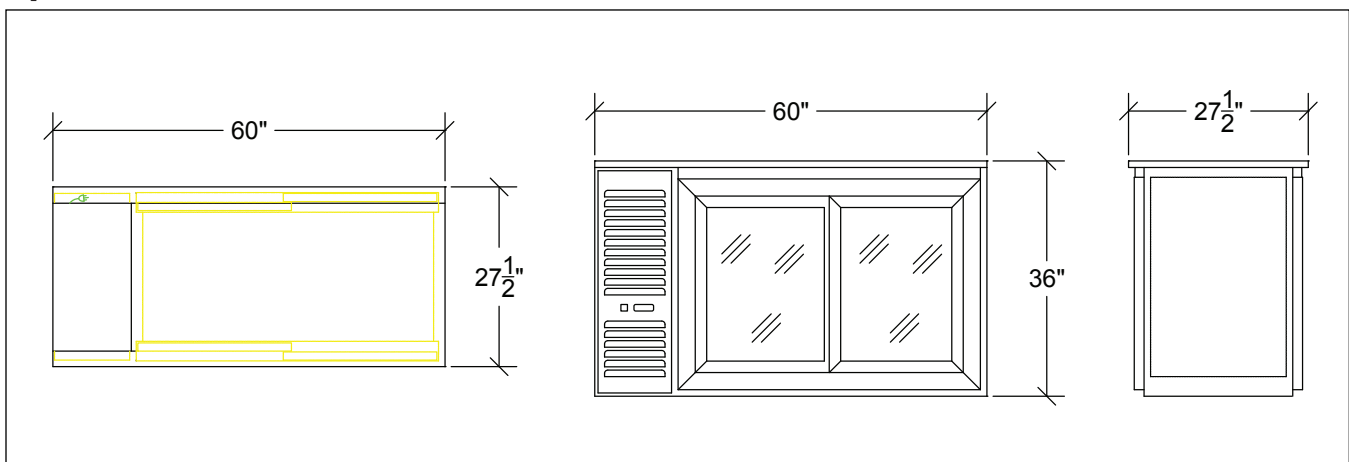
<b>BS-100</b>	Four 6" Stainless Steel Legs
<b>BS-102</b>	Four 4" Stainless Steel Legs
<b>BS-106</b>	Left Side Stainless Steel Kick Plates
<b>BS-107</b>	Right Side Stainless Steel Kick Plate
<b>BS-108</b>	Four 3" Casters with Brakes
<b>BS-160</b>	60" Stainless Steel Front Kick Plate
<b>BC-130</b>	1" Ultra Low Profile Casters w/ Brakes
<b>BC-132</b>	Four 2" Low Profile Casters w/ Brakes
<b>BC-134</b>	Four 3" Casters w/ Brakes

### Standard Features

<b>Electrical</b>	115 V, 1 Phase, 60 Hz. Furnished with 8'-0" plug-in cord, which exits left rear of cooler.	
	NEMA 5-15P Plug Configuration. Dedicated 15 Amp circuit recommended. 6.0 Full Load Amps, 1/4 HP	
<b>Refrigeration</b>	Self-contained 134A Refrigerant.	
	30°F - 40°F operating range. Digital Thermostat on front grille.	
<b>Case Capacity</b>	Long Neck Bottle:	15.5
	12 oz. Cans:	20
	Wine Bottles (each):	162
<b>Interior</b>	20 gauge stainless steel with coved corners.	
	Two adjustable epoxy coated wire shelves with floor rack per door. Door Opening: 29-11/16" high x 19-15/16" wide	
<b>Exterior</b>	Sides: 20 gauge stainless steel	
	Front: Black vinyl w/ glass doors Back: Black vinyl w/ glass doors Top: Stainless steel top	
<b>Insulation</b>	2" thick foamed-in-place polyurethane	
<b>Plumbing</b>	No drain connection required.	
	Condensate evaporator pan included.	

**\*This equipment is intended for the storage and display of non-potentially hazardous bottle or canned products only.\***

### Specifications



**Note:** Optional casters raise height 1" higher than wheel size

**Note:** Optional 4" or 6" legs available



**Krowne Metal Corporation** • 100 Haul Rd. Wayne, NJ 07470 • Toll Free: (800) 631-0442 • Fax: (973) 872-1129 • sales@krowne.com • krowne.com

Due to our commitment to continued product improvement, specifications are subject to change without notice.

Rev. 6/2019 • No. 1.11